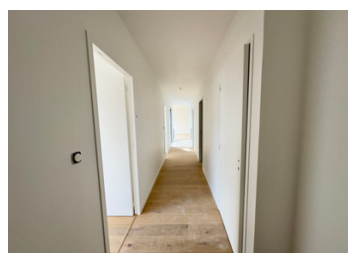
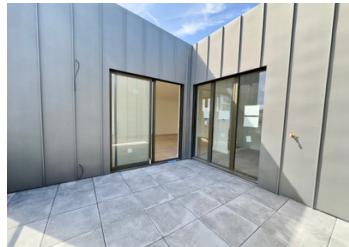
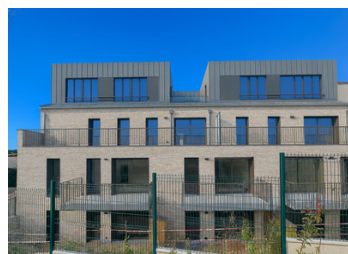


PLENEUF-VAL-ANDRE SUPERB NEW 5-ROOM APARTMENT 134 m TERRACE 12 m CELLAR 2 UNDERGROUND PARKING SPACES



INFORMATION

Town:	Pléneuf-Val-André
Department:	Côtes-d'Armor
Bed:	4
Bath:	3
Floor:	134 m2
Outside Space:	12 m2



IN BRIEF

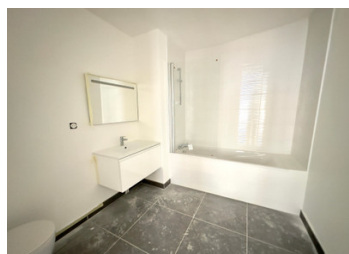
In the Côtes d'Armor region of Brittany, in PLÉNEUF-VAL-ANDRÉ, a historic family seaside resort, this magnificent residence is part of a 3-storey development overlooking the port of Dahouët. 27 flats from T2 to T5 with terraces and balconies and/or small private gardens. Walking distance to local shops and the Saturday market on the port. Sandy beaches, coastal path, cycling, fishing, 18-hole golf course, spa, casino. Close to Rennes and ferries from Saint-Malo to Jersey, Plymouth and Portsmouth.

ENERGY - DPE

DPE not required.

NB. Quoted prices relate to euro transactions. Fluctuations in exchange rates are not the responsibility of the agency or those representing it. The agency and its representatives are not authorised to make or give guarantees relating to the property. These particulars do not form part of any contract but are to be taken as a general representation of the property. Any areas, measurements or distances are approximate. Text, photographs and plans, where applicable, are for guidance only. Leggett and its representatives have not tested services, equipment or facilities and cannot guarantee the same.

Particulars for off-plan purchases are intended as a guide only. Final finishes to the property may vary. Purchasers are advised to engage a solicitor to check the plans and specifications as laid out in their purchase contract with the developer.



DESCRIPTION

This 134.74 m² four-bedroom flat on the third and top floor, facing east, has four bedrooms, one living room/kitchen, one bathroom, one shower room, a 3.22 x 3.87 m terrace, a cellar (number C4) and two covered parking spaces in the basement (spaces 06B and 09).

The surface areas are as follows:

Entrance hall/cupboard 5.86 m²

Living room/kitchen 40.86 m²

Bedroom 1 20.65 m²

Bedroom 2 + cupboard 14.85 m²

Bedroom 3 12.37 m²

Bedroom 4 11.06 m²

Bathroom + WC 6.33 m²

Shower room 3.52 m²

Hallway 1 10.04 m²

Hallway 2 2.76 m²

WC + 2.21 m²

Laundry room 4.23 m²

TOTAL 134.74 m²

Terrace 12.27 m²

NOTES

Information about risks to which this property is exposed is available on the Géorisques website : <https://www.georisques.gouv.fr>