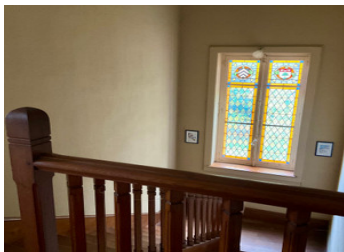


Stately manor house and second large stone building with lots of potential in walled garden in the countryside

EXCLUSIVE



INFORMATION

Town:	Vidaillat
Department:	Creuse
Bed:	4
Bath:	1
Floor:	188 m ²
Plot Size:	7165 m ²

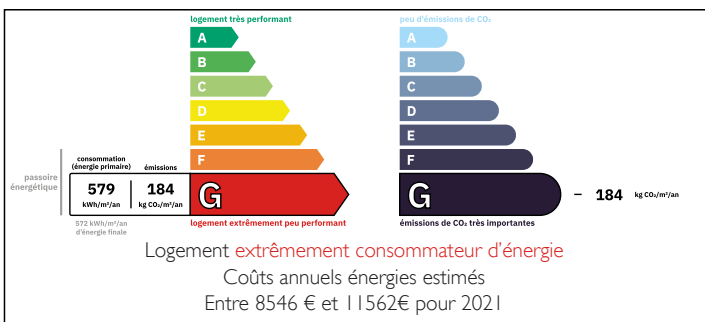
IN BRIEF

Not far from Vidaillat, this unique country manor is set in spacious garden grounds, in a hamlet down a no-through road.

The small village of Vidaillat is within walking distance and has a friendly cafe restaurant, a mairie with village hall, and a post box (in other words, tiny, and perfect for a life or holiday in peace and tranquility). St Hilaire, a few minutes by car, has a well-stocked épicerie with a bread depot. Swimming lakes are nearby, and the area is known for outdoor activities such as walking and cycling, the space and greenery.

The commune of Vidaillat stretches over nearly 25km² of verdant countryside and forest, yet has a population of around 200.

ENERGY - DPE



NB. Quoted prices relate to euro transactions. Fluctuations in exchange rates are not the responsibility of the agency or those representing it. The agency and its representatives are not authorised to make or give guarantees relating to the property. These particulars do not form part of any contract but are to be taken as a general representation of the property. Any areas, measurements or distances are approximate. Text, photographs and plans, where applicable, are for guidance only. Leggett and its representatives have not tested services, equipment or facilities and cannot guarantee the same.

Particulars for off-plan purchases are intended as a guide only. Final finishes to the property may vary. Purchasers are advised to engage a solicitor to check the plans and specifications as laid out in their purchase contract with the developer.



DESCRIPTION

This elegant maison de maître, unique in the area because it is built with Lyonnais stone by a builder who also built several Lyonnaise grand buildings, has tiled and parquet floors, and spacious living accommodation. It needs modernisation but exudes stately charm.

The glazed double front doors open into a large, square hallway, with doors leading to the left, right and rear. To the left is an impressive dining room with stone open fireplace, with a dual aspect salon behind. To the right is a large parquet-floored room which can be used as a second sitting area or ground floor bedroom. To the rear left, there is access to the kitchen space with a small side area with dated but functional fitted units and sink. This room leads to the utility room and also back door. To the rear right, there is a door to the stairway, downstairs toilet and bathroom.

A wooden stairs case has a half-landing with feature stained glass window. At the top of the stairs there is an office and WC before entering the large upper landing. There are three well-proportioned bedrooms each with a small connecting washroom, each with sink and bidet. There is plenty fitted storage space on the landing and a walk-in cupboard. A final doorway opens to the stairs to the loft, which is possible to convert. This space, the full length of the...

LOCAL TAXES

Taxe habitation: EUR

NOTES