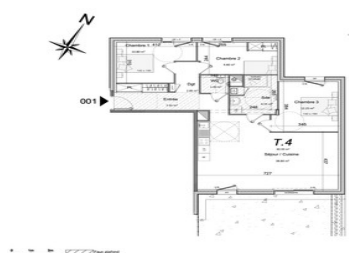


NEW 3-bedroom ground floor flat with 58 m2 private garden



NIVEAU	TYPE	APPARTEMENT n°
RDC	T4	001



001 SURFACES HABITABLES	
Entrée	7,55 m ²
Séjour / Cuisine	38,80 m ²
Dgt	2,85 m ²
Sde	6,55 m ²
Wc	1,95 m ²
Chambre 1	10,80 m ²
Chambre 2	9,80 m ²
Chambre 3	12,25 m ²
TOTAL SURFACE HABITABLE	96,55 m²

SURFACES ANNEXES PRIVATIVES	
Terrasse	m ²
Jardin (puissance privative)	58,60 m ²

ENERGY - DPE

DPE not required.

INFORMATION

Town:	Perros-Guirec
Department:	Côtes-d'Armor
Bed:	3
Bath:	1
Floor:	91 m ²
Outside Space:	58 m ²

IN BRIEF

In Brittany, by the sea, in Perros-Guirec in the heart of the Pink Granite Coast, a small, beautiful residence of 22 flats just a stone's throw from the marina. Shops, market, bakeries, chemists and restaurants are all within easy reach. The residence has just 2 storeys and is ideal for both main and second homes. It combines architectural charm with the comfort of modern amenities: secure residence, private parking, landscaped exteriors, acoustic comfort, connected home, fully-equipped kitchen, individual condensing boiler, quality finishing in the bedrooms.

NB. Quoted prices relate to euro transactions. Fluctuations in exchange rates are not the responsibility of the agency or those representing it. The agency and its representatives are not authorised to make or give guarantees relating to the property. These particulars do not form part of any contract but are to be taken as a general representation of the property. Any areas, measurements or distances are approximate. Text, photographs and plans, where applicable, are for guidance only. Leggett and its representatives have not tested services, equipment or facilities and cannot guarantee the same.

Particulars for off-plan purchases are intended as a guide only. Final finishes to the property may vary. Purchasers are advised to engage a solicitor to check the plans and specifications as laid out in their purchase contract with the developer.



DESCRIPTION

The 3-bedroom flat has a floor area of 90.55 m² and a private garden of 58.60 m². Parking space in the basement.

It comprises a 7.55 m² entrance hall, a 6.55 m² shower room, a 1.95 m² separate toilet, a 2.85 m² hallway, a 38.80 m² living room/kitchen and 3 bedrooms of 10.80 m², 9.80 m² and 12.25 m².

Information about risks to which this property is exposed is available on the Géorisques website : <https://www.georisques.gouv.fr>



NOTES