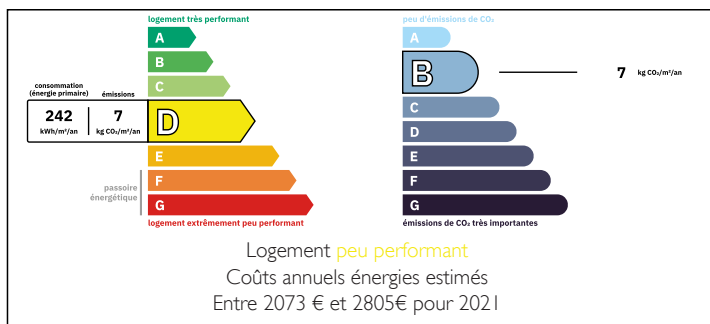


Spacious 5-bedroom home with breathtaking countryside views and potential to expand or create rental income.



ENERGY - DPE



INFORMATION

Town:	Spézet
Department:	Finistère
Bed:	5
Bath:	2
Floor:	164 m ²
Plot Size:	3752 m ²

IN BRIEF

Spacious 5-Bedroom Home with Breathtaking Countryside Views and potential to expand or create rental income.

Set within a stunning mature garden, this bright and spacious 5-bedroom home offers panoramic countryside views.

Main House -

- Modern, fully equipped kitchen
- Expansive 30m² living room with panoramic windows leading to a terrace and garden
- Five generously sized bedrooms

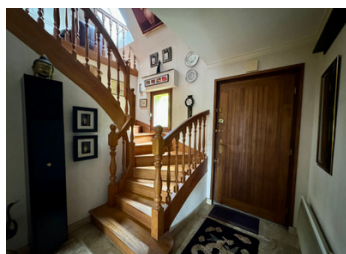
Extensive Basement -

- Two workshops
- Garage
- Additional kitchen
- Shower room
- Wine cellar

NB. Quoted prices relate to euro transactions. Fluctuations in exchange rates are not the responsibility of the agency or those representing it. The agency and its representatives are not authorised to make or give guarantees relating to the property. These particulars do not form part of any contract but are to be taken as a general representation of the property. Any areas, measurements or distances are approximate. Text, photographs and plans, where applicable, are for guidance only. Leggett and its representatives have not tested services, equipment or facilities and cannot guarantee the same.

Particulars for off-plan purchases are intended as a guide only. Final finishes to the property may vary. Purchasers are advised to engage a solicitor to check the plans and specifications as laid out in their purchase contract with the developer.

countryside retreat with possibilities for expansion or rental income



DESCRIPTION

Ground floor - 89m²
Kitchen - 22m²
Living room - 32m²
Hallway - 10m²
Bedroom 1 - 15m²
Shower room - 4m²
Office - 5m²
W.C. - 2m²

1st Floor - 62m²
Bedroom 2 - 8.6m²
Bedroom 3 - 11m²
Bedroom 4 - 18m²
Bedroom 5 - 7m²
Bathroom - 7m²
W.C. - 1.4m²
Landing - 7m²

Basement - Total - 61m²
Kitchen - 13m²
Garage - 22m²
Workshop 1 - 16m²
Workshop 2 - 20m²
Cellar - 8m²
Boiler room - 13.4m²
Landing - 3.8m²

Information about risks to which this property is exposed is available on the Géorisques website : <https://www.georisques.gouv.fr>

LOCAL TAXES

Taxe foncière: **9210 EUR**

NOTES