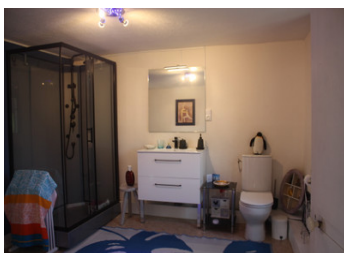


Pretty country cottage in tranquil rural area, three bedrooms, mature, large garden, garage/workshop.



INFORMATION

Town:	Domessin
Department:	Savoie
Bed:	3
Bath:	2
Floor:	114 m ²
Plot Size:	1750 m ²



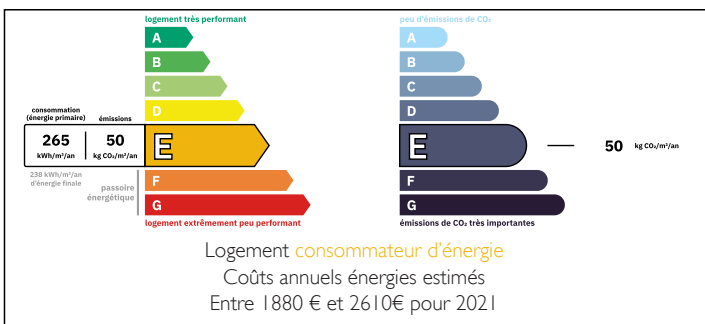
IN BRIEF

Well situated country cottage, less than 4km from town with all the usual and expected facilities. Close to the nature reserve of Lake Aiguebelette (8 km) and the Chartreuse mountains.

Le Pont de Beauvoisin (4 km), Chambéry (29 km), Grenoble (54 km), Lyon (87 km), Geneva (102 km). Motorway A43 is 8 km, train station at Pont de Beauvoisin, 3.5 km

Airports : Lyon (69 km), Geneva (104 km)

ENERGY - DPE



NB. Quoted prices relate to euro transactions. Fluctuations in exchange rates are not the responsibility of the agency or those representing it. The agency and its representatives are not authorised to make or give guarantees relating to the property. These particulars do not form part of any contract but are to be taken as a general representation of the property. Any areas, measurements or distances are approximate. Text, photographs and plans, where applicable, are for guidance only. Leggett and its representatives have not tested services, equipment or facilities and cannot guarantee the same.

Particulars for off-plan purchases are intended as a guide only. Final finishes to the property may vary. Purchasers are advised to engage a solicitor to check the plans and specifications as laid out in their purchase contract with the developer.



DESCRIPTION

Ground floor :

Kitchen (19.1m²), Living room (22.8m²), Bathroom (5.7m²), Entrance hall (4.6m²), WC (2m²).

First floor : Three bedrms, large bathroom with WC.

Habitable area, 114m².

Basement, 30m².

Garage/workshop, 25m².

Large, mature garden in a plot of 1750m².

Information about risks to which this property is exposed is available on the Géorisques website : <https://www.georisques.gouv.fr>

LOCAL TAXES

Taxe habitation: EUR

NOTES