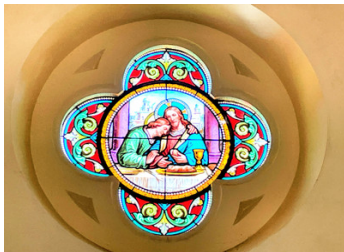


Unique 18th-century Convent Property with Chapel, B&B and Garden – Saint-Pierre-en-Auge (Calvados)



INFORMATION

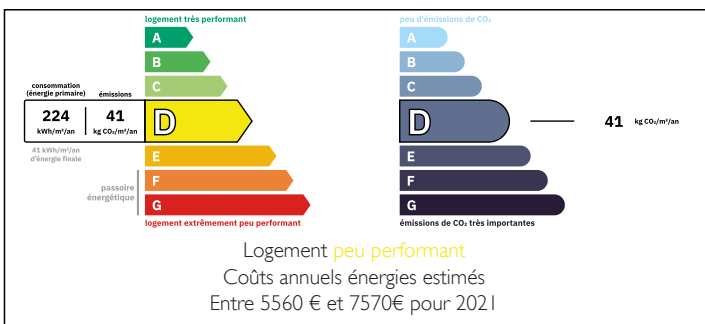
Town:	Saint-Pierre-en-Auge
Department:	Calvados
Bed:	8
Bath:	5
Floor:	450 m ²
Plot Size:	2317 m ²



IN BRIEF

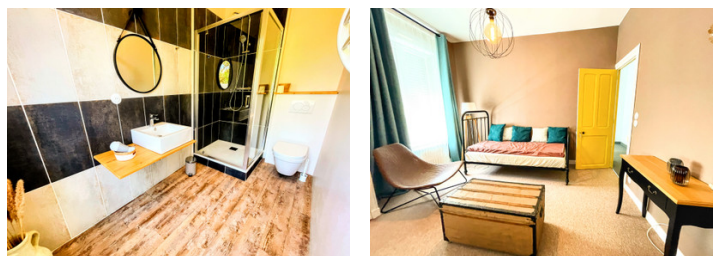
For sale in Saint-Pierre-en-Auge (Calvados), stunning 18th-century former convent with chapel, now a charming B&B. 400 m² across 3 floors with a 2,300 m² enclosed garden. Main house includes private quarters, 4 en-suite guest rooms, breakfast room in the chapel, leisure area, and convertible attic. Outbuilding features gym, spa, sauna, terrace, office, and gîte potential. Full of character: stained glass, stone and brickwork, fireplace. Strong tourism potential in a quiet location close to shops and services. More info available upon request.

ENERGY - DPE



NB. Quoted prices relate to euro transactions. Fluctuations in exchange rates are not the responsibility of the agency or those representing it. The agency and its representatives are not authorised to make or give guarantees relating to the property. These particulars do not form part of any contract but are to be taken as a general representation of the property. Any areas, measurements or distances are approximate. Text, photographs and plans, where applicable, are for guidance only. Leggett and its representatives have not tested services, equipment or facilities and cannot guarantee the same.

Particulars for off-plan purchases are intended as a guide only. Final finishes to the property may vary. Purchasers are advised to engage a solicitor to check the plans and specifications as laid out in their purchase contract with the developer.



DESCRIPTION

FOR SALE, Rare opportunity

Unique 18th-century Convent Property with Chapel, B&B and Garden – Saint-Pierre-en-Auge (Calvados)

Located in the heart of the picturesque Pays d'Auge, this remarkable former convent from 1750, once home to the Sisters of Providence of Lisieux, offers a rare blend of history, character, and tranquility.

- Living area: approx. 400 m² over 3 floors
- Enclosed garden: 2,300 m² with mature trees and lush vegetation
- Main residence + converted outbuilding
- Period chapel with stained-glass windows and bell tower

Main house includes:

Ground floor (private owner's space): entrance, living room with fireplace, kitchen, dining area, 2 offices, 4 bedrooms, bathroom, WC

First floor: 4 en-suite guest rooms, chapel (used as guest lounge and breakfast room), second kitchen, utility/laundry room

Second floor: large games room/library/billiards space, plus 70 m² still available for conversion (ideal for guest accommodation)

Outbuilding features:

Wellness area: gym, sauna, spa, terrace

Office and 2 additional rooms that can be turned into a self-contained gîte

Covered outdoor area with barbecue, facing the garden

Highlights:

Strong potential and existing success as a Bed & Breakfast

Central location: shops, schools, local events nearby

Rare architectural charm: stone and brickwork, stained-glass windows, peaceful retreat in total privacy

LOCAL TAXES

Taxe habitation: EUR

NOTES