

## UNDER OFFER - Stone house, barn and sheepfold for renovation



## INFORMATION

<b>Town:</b>	<b>Saint-Félix-de-Villadeix</b>
<b>Department:</b>	<b>Dordogne</b>
<b>Bed:</b>	<b>5</b>
<b>Bath:</b>	<b>0</b>
<b>Floor:</b>	<b>250 m2</b>
<b>Plot Size:</b>	<b>20000 m2</b>



## IN BRIEF

Stone house with barns and former sheepfold as well as a large agricultural shed/workshop.

The stone house comprises a room of 33m2 and an upper floor of 20m2.

The first barn has a floor surface area of 40m2 and could be used to create an upper floor.

The second half-collapsed barn has a floor surface area of approx. 40m2.

There is another small barn in good condition.

The sheepfold has 36m2 of floor space.

The large shed is in very good condition.

Current land of +/- 2,730m2 with the possibility of buying more agricultural land to the rear (large part available).

Very nice location with views, quiet and close to the village centre.

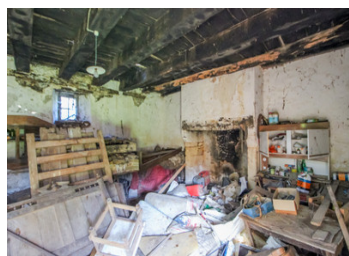
Possibility to buy other buildings to renovate.

## ENERGY - DPE

DPE not required.

NB. Quoted prices relate to euro transactions. Fluctuations in exchange rates are not the responsibility of the agency or those representing it. The agency and its representatives are not authorised to make or give guarantees relating to the property. These particulars do not form part of any contract but are to be taken as a general representation of the property. Any areas, measurements or distances are approximate. Text, photographs and plans, where applicable, are for guidance only. Leggett and its representatives have not tested services, equipment or facilities and cannot guarantee the same.

Particulars for off-plan purchases are intended as a guide only. Final finishes to the property may vary. Purchasers are advised to engage a solicitor to check the plans and specifications as laid out in their purchase contract with the developer.



## DESCRIPTION

Stone house with barns and former sheepfold as well as a large agricultural shed/workshop.

The stone house comprises a room of 33m<sup>2</sup> and an upper floor of 20m<sup>2</sup>.

The first barn has a floor surface area of 40m<sup>2</sup> and could be used to create an upper floor.

The second half-collapsed barn has a floor surface area of approx. 40m<sup>2</sup>.

There is another small barn in good condition.

The sheepfold has 36m<sup>2</sup> of floor space.

The large shed is in very good condition.

Current land of +/- 2,730m<sup>2</sup> with the possibility of buying more agricultural land to the rear (large part available).

Very nice location with views, quiet and close to the village centre.

Possibility to buy other buildings to renovate.

-----

Information about risks to which this property is exposed is available on the Géorisques website : <https://www.georisques.gouv.fr>

## LOCAL TAXES

Taxe habitation:

EUR

## NOTES