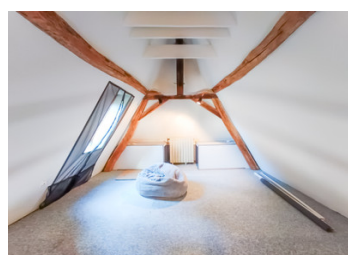


Stone house in the countryside close to amenities



INFORMATION

Town:	Bassillac
Department:	Dordogne
Bed:	3
Bath:	2
Floor:	95 m ²
Plot Size:	2500 m ²

IN BRIEF

Pretty character house in the countryside close to amenities.

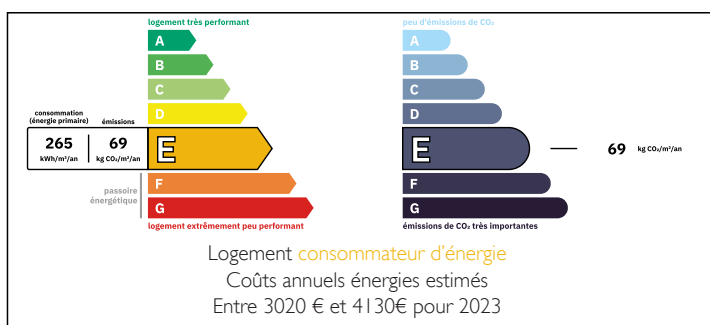
On the outskirts of Périgueux, in a highly sought-after area, stone house in the countryside.

It comprises 2 parts:

- The first, main house, living room built around a large open fireplace with kitchen and lounge, wc. Upstairs, 2 bedrooms with a shared bathroom.
- The second part, connected by a utility room, comprises a lounge with a mezzanine bedroom, shower room and wc. Ideal for a business or family.

For lovers of the countryside, the house is built on a large plot of 2500 m².

ENERGY - DPE



NB. Quoted prices relate to euro transactions. Fluctuations in exchange rates are not the responsibility of the agency or those representing it. The agency and its representatives are not authorised to make or give guarantees relating to the property. These particulars do not form part of any contract but are to be taken as a general representation of the property. Any areas, measurements or distances are approximate. Text, photographs and plans, where applicable, are for guidance only. Leggett and its representatives have not tested services, equipment or facilities and cannot guarantee the same.

Particulars for off-plan purchases are intended as a guide only. Final finishes to the property may vary. Purchasers are advised to engage a solicitor to check the plans and specifications as laid out in their purchase contract with the developer.



DESCRIPTION

Pretty character house in the countryside close to amenities.

On the outskirts of Périgueux, in a highly sought-after area, stone house in the countryside.

It comprises 2 parts:

- The first, main house, living room built around a large open fireplace with kitchen and lounge, wc. Upstairs, 2 bedrooms with a shared bathroom.
- The second part, connected by a utility room, comprises a lounge with a mezzanine bedroom, shower room and wc. Ideal for a business or family.

For lovers of the countryside, the house is built on a large plot of 2500 m2.

Information about risks to which this property is exposed is available on the Géorisques website : <https://www.georisques.gouv.fr>

LOCAL TAXES

Taxe foncière: 1075 EUR

Taxe habitation: EUR

NOTES