

Beautifully renovated country house with mature gardens in walking distance to Sourdeval



## INFORMATION

Town:	Sourdeval
Department:	Manche
Bed:	2
Bath:	2
Floor:	116 m2
Plot Size:	2127 m2



## IN BRIEF

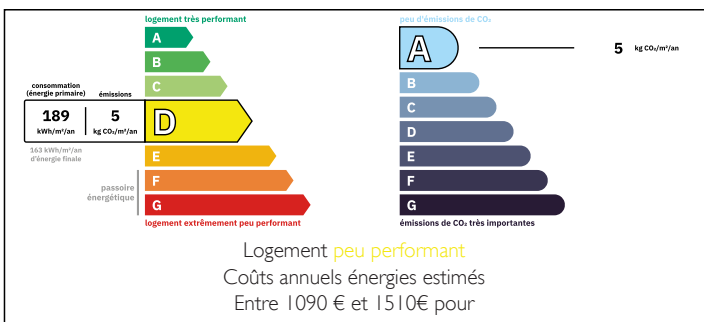
Charming Renovated Stone Country House with Stunning Views – Walking Distance to Sourdeval

Nestled in an elevated position with sweeping countryside views, this beautifully renovated 2-bedroom, 2-bathroom stone-built home offers the perfect blend of rustic charm and modern comfort. Set within mature, landscaped gardens, the property provides a peaceful retreat while being just a short stroll from the vibrant town of Sourdeval.

Inside, the house boasts light-filled living spaces, exposed stonework, and thoughtful renovations throughout. The accommodation includes two spacious bedrooms, each with its own bathroom, ideal for guests or family living.

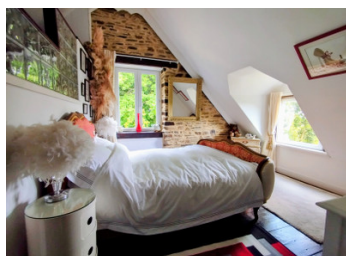
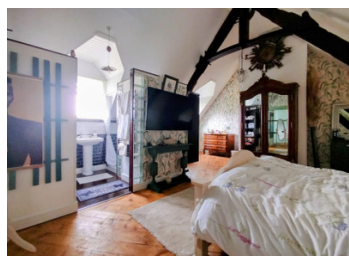
Outside, enjoy the tranquil setting with well-established gardens, perfect for relaxing or entertaining while taking in the panoramic views of

## ENERGY - DPE



NB. Quoted prices relate to euro transactions. Fluctuations in exchange rates are not the responsibility of the agency or those representing it. The agency and its representatives are not authorised to make or give guarantees relating to the property. These particulars do not form part of any contract but are to be taken as a general representation of the property. Any areas, measurements or distances are approximate. Text, photographs and plans, where applicable, are for guidance only. Leggett and its representatives have not tested services, equipment or facilities and cannot guarantee the same.

Particulars for off-plan purchases are intended as a guide only. Final finishes to the property may vary. Purchasers are advised to engage a solicitor to check the plans and specifications as laid out in their purchase contract with the developer.



## DESCRIPTION

Beautifully Renovated Stone Country House with Panoramic Views – Walking Distance to Sourdeval Set in a quiet, elevated position on the edge of the popular market town of Sourdeval, this charming 2-bedroom, 2-bathroom stone-built home has been tastefully renovated to create a warm, welcoming country retreat with all modern comforts.

### Accommodation

The property has been sympathetically restored, preserving its original character while ensuring a high standard of finish throughout. Exposed stone walls, wood beams, and quality materials blend seamlessly with contemporary upgrades.

On the ground floor, a spacious entrance leads into a bright and inviting open-plan living and dining area, featuring a wood-burning stove and large windows that frame the stunning countryside views. The modern fitted kitchen is well-equipped and thoughtfully laid out, and leads through to beautiful sunroom, ideal for both everyday living and entertaining.

A ground floor WC adds convenience, and there's also a practical utility area.

Upstairs, there are two generously sized double bedrooms, both filled with natural light and offering serene views over the surrounding landscape. The principal bedroom benefits from an en-suite bathroom, and both rooms feature charming original features.

### Outdoor Space

The property sits within mature, landscaped gardens that have been lovingly maintained, offering a mix of lawns, established borders. Whether you're enjoying your morning coffee or entertaining friends, the garden provides the perfect setting with its privacy and outlook.

There is also plenty of space for off-road parking and

## LOCAL TAXES

Taxe habitation: EUR

## NOTES