

3-bedroom detached stone house in pleasant village, with stunning views and delightful garden.



EXCLUSIVE

INFORMATION

Town:	Le Mené
Department:	Côtes-d'Armor
Bed:	3
Bath:	2
Floor:	98 m2
Plot Size:	2309 m2



IN BRIEF

Stone house with 3 bedrooms and a beautiful garden, located in an attractive village in Le Mené with a primary school, local shop, and garage. Set in an elevated position, the property offers open views over the surrounding countryside.

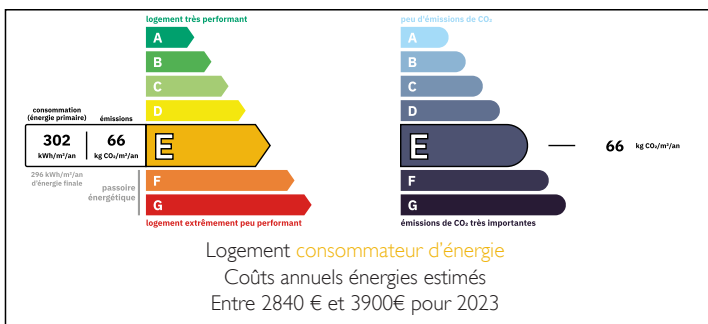


On the ground floor: a spacious and bright living room with a wood-burning stove, opening onto a modern fitted kitchen, a WC, a utility room with a large workshop/storage area, a boiler room, and access to the garden.



Upstairs: three bright, south-facing bedrooms, including a master suite with a recently renovated bathroom, and a separate shower room with WC. Additional conversion potential in the attic, which could be suitable for development.

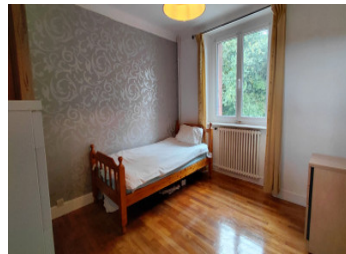
ENERGY - DPE



Outside, the garden is laid out over several levels, featuring a terrace area, a small pond, a vegetable

NB. Quoted prices relate to euro transactions. Fluctuations in exchange rates are not the responsibility of the agency or those representing it. The agency and its representatives are not authorised to make or give guarantees relating to the property. These particulars do not form part of any contract but are to be taken as a general representation of the property. Any areas, measurements or distances are approximate. Text, photographs and plans, where applicable, are for guidance only. Leggett and its representatives have not tested services, equipment or facilities and cannot guarantee the same.

Particulars for off-plan purchases are intended as a guide only. Final finishes to the property may vary. Purchasers are advised to engage a solicitor to check the plans and specifications as laid out in their purchase contract with the developer.



DESCRIPTION

Located in a quiet village in the Le Mené area, this recently renovated traditional stone house enjoys an elevated position with open views over the surrounding countryside. It offers a pleasant living environment, balancing rural peace with easy access to essential amenities.

The village includes a primary school, a small local shop, and a garage, providing everyday convenience without the need for long journeys. Just 10 minutes away by car, the town of Plémet offers a full range of services: supermarket, bakeries, cafés and restaurants, pharmacy, medical centre, library, sports facilities, and schools. The larger town of Saint-Brieuc is located 44 km away.

The ground floor features a bright living room with an efficient wood-burning stove, open to a recently fitted, modern and functional kitchen. From here, there is direct access to the utility room, boiler room, and rear garden.

Upstairs, the house includes three south-facing bedrooms of approximately 11 m² each, all benefiting from natural light. One bedroom connects to a private bathroom with bathtub, while a second shower room with WC is accessed from the hallway. The layout is well-designed, with comfortable proportions and the house is in good general condition.

The attic, currently unused, could be converted into one or two additional rooms depending on your needs—bedrooms, office space, games room, etc.

The outdoor space is divided into several areas: terraces, a small pond, shaded seating spots, and a large shed suitable for use as a garage. The entire plot offers a pleasant garden setting in...

LOCAL TAXES

Taxe habitation: EUR

NOTES