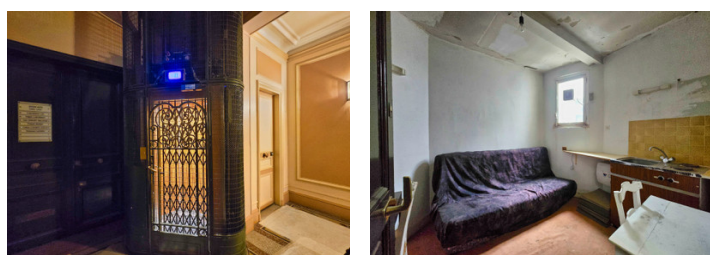
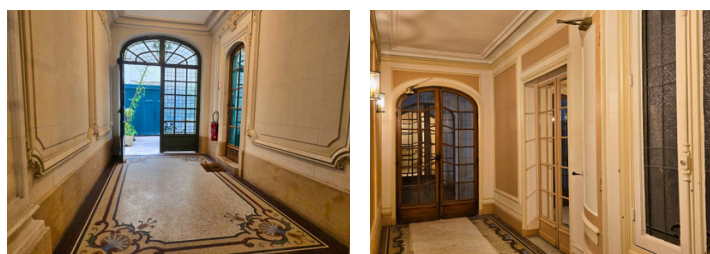


One-room apartment in a Haussmannian building, in the 16th arrondissement of Paris, on the 6th floor, 2 access



## INFORMATION

Town:	Paris 16e Arrondissement
Department:	Paris
Bed:	1
Bath:	1
Floor:	8 m2
Plot Size:	0 m2



## IN BRIEF

Paris 16 - Rue de la Tour - The charm of this apartment lies in its setting itself — the Haussmannian building — and its location in the city of Paris, close to the Bois de Boulogne, the Trocadéro and the Eiffel Tower, two world-renowned historical monuments. The apartment itself of about 8 sqm demonstrates its practical side with the kitchen area, the bedroom area, the storage area, the toilets being not far in the corridor as well as the lift. Ideal for a student or as a quiet Parisian office space.

## ENERGY - DPE

DPE not required.

NB. Quoted prices relate to euro transactions. Fluctuations in exchange rates are not the responsibility of the agency or those representing it. The agency and its representatives are not authorised to make or give guarantees relating to the property. These particulars do not form part of any contract but are to be taken as a general representation of the property. Any areas, measurements or distances are approximate. Text, photographs and plans, where applicable, are for guidance only. Leggett and its representatives have not tested services, equipment or facilities and cannot guarantee the same.

Particulars for off-plan purchases are intended as a guide only. Final finishes to the property may vary. Purchasers are advised to engage a solicitor to check the plans and specifications as laid out in their purchase contract with the developer.



## DESCRIPTION

Paris 16 - Rue de la Tour - The charm of this apartment lies in its setting itself — the Haussmannian building — and its location in the city of Paris, close to the Bois de Boulogne, the Trocadéro and the Eiffel Tower, two world-renowned historical monuments. The apartment itself of about 8 sqm demonstrates its practical side with the kitchen area, the bedroom area, the storage area, the toilets being not far in the corridor as well as the lift. Ideal for a student or as a quiet Parisian office space.

-----  
Co-owned building of 1 units  
Provisional annual charges: 310€

-----  
Information about risks to which this property is exposed is available on the Géorisques website : <https://www.georisques.gouv.fr>

## LOCAL TAXES

Taxe foncière: 152 EUR

Taxe habitation: EUR

## NOTES