

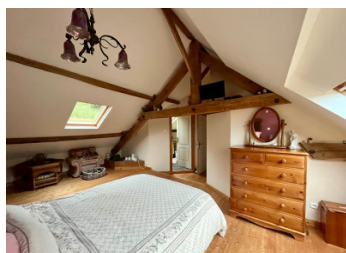
Renovated Normandy Stone Farmhouse for Sale – 4 Bedrooms – 5 Acres – Refeuille, Brécey, Manche



EXCLUSIVE

INFORMATION

Town:	Reffuville
Department:	Manche
Bed:	3
Bath:	2
Floor:	135 m2
Plot Size:	20020 m2



IN BRIEF

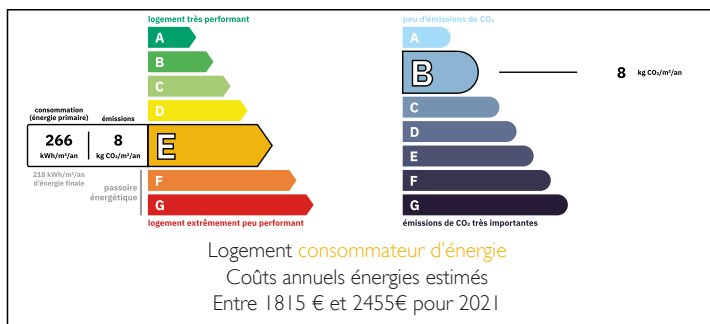
Charming Normandy Home with Garden & Outbuildings — Ideal Family Residence, Holiday Home or Investment

Located in the sought-after Manche region of Normandy, this attractive property offers peaceful surroundings while remaining close to shops, schools, and everyday amenities. Set within a generous plot with garden and useful outbuildings, it is well suited as a permanent home, second residence, or rental investment.

The house provides comfortable accommodation with scope for modernisation, retaining the character typical of traditional Normandy properties. The outdoor space offers privacy without isolation, ideal for relaxation, gardening, or entertaining.

The Normandy coastline, beaches, and major attractions — including Mont-Saint-Michel — are

ENERGY - DPE



NB. Quoted prices relate to euro transactions. Fluctuations in exchange rates are not the responsibility of the agency or those representing it. The agency and its representatives are not authorised to make or give guarantees relating to the property. These particulars do not form part of any contract but are to be taken as a general representation of the property. Any areas, measurements or distances are approximate. Text, photographs and plans, where applicable, are for guidance only. Leggett and its representatives have not tested services, equipment or facilities and cannot guarantee the same.

Particulars for off-plan purchases are intended as a guide only. Final finishes to the property may vary. Purchasers are advised to engage a solicitor to check the plans and specifications as laid out in their purchase contract with the developer.



DESCRIPTION

Character Home with Garden and Outbuildings

Manche, Normandy — Close to Amenities, Coast & Transport Links

Situated in a desirable area of Normandy, this character property offers an excellent opportunity to enjoy the region's renowned quality of life while remaining close to essential services. Suitable as a résidence principale, résidence secondaire, or investment, it combines traditional charm with functional living space.

The house provides well-proportioned accommodation with bright living areas and multiple bedrooms, ideal for family life or visiting guests. While comfortable as it stands, there is scope for updating to suit individual preferences.

Set within a generous plot, the property benefits from private gardens and useful outbuildings, offering space for storage, hobbies, or potential future development (subject to permissions). The outdoor area is perfect for gardening, outdoor dining, or simply enjoying the peaceful surroundings.

Nearby towns offer shops, schools, healthcare, and local markets, while the Normandy coastline and beaches are within easy reach. The property is also well placed for exploring the region's historic sites, including Mont-Saint-Michel.

Transport links are convenient, with access to major roads, rail connections to Paris, ferry ports serving the UK, and regional airports — making the property particularly appealing to international buyers as well as French residents.

A Property for Many Uses

This versatile home will appeal to:

Families seeking space and convenience

LOCAL TAXES

Taxe habitation: EUR

NOTES