

Charming former Millhouse For Sale in the commune Anjouin (Indre, 36) 4 large Bedrooms, 3 reception rooms.



INFORMATION

Town:	Anjouin
Department:	Indre
Bed:	4
Bath:	1
Floor:	254 m2
Plot Size:	24979 m2



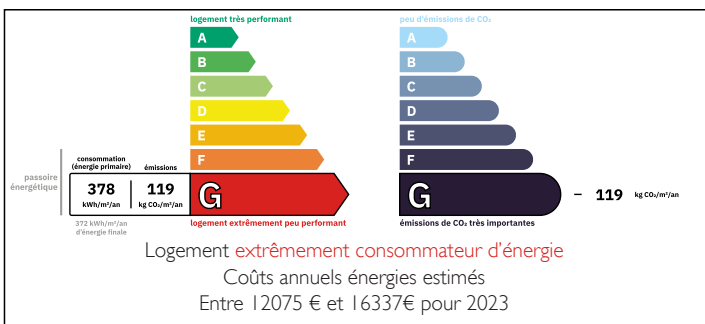
IN BRIEF

Two, Double electric gates lead to this delightful former millhouse property, which comes complete with its original waterwheel and many great character features. It offers an impressive 254 m² of living space, surrounded by large mature front and back gardens and bordered by a river running alongside the property.

This property boast generous sized rooms which include a dining room, kitchen 3 large reception rooms and 4 spacious bedrooms and a very roomy veranda.

The property is in a peaceful setting with natural beauty of rolling countryside and woodlands, it comes with additional surrounding plots of land totalling 24,979 m², featuring areas of trees, shrubs, and open countryside.

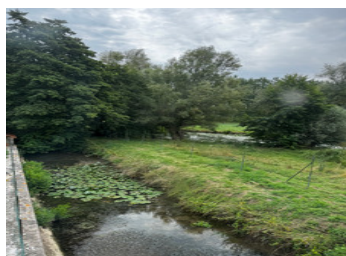
ENERGY - DPE



A large outbuilding comprising of a garage, store

NB. Quoted prices relate to euro transactions. Fluctuations in exchange rates are not the responsibility of the agency or those representing it. The agency and its representatives are not authorised to make or give guarantees relating to the property. These particulars do not form part of any contract but are to be taken as a general representation of the property. Any areas, measurements or distances are approximate. Text, photographs and plans, where applicable, are for guidance only. Leggett and its representatives have not tested services, equipment or facilities and cannot guarantee the same.

Particulars for off-plan purchases are intended as a guide only. Final finishes to the property may vary. Purchasers are advised to engage a solicitor to check the plans and specifications as laid out in their purchase contract with the developer.



DESCRIPTION

This charming property is for Sale in the commune of Anjouin (Indre, 36)

It is a delightful former millhouse, complete with its original waterwheel, offering an impressive 254 m² of living space, surrounded by large front and back gardens and bordered by a river running alongside the property.

The house enjoys a peaceful setting with natural beauty all around and comes with additional surrounding plots with land totalling 24,979 m², featuring areas of trees, shrubs, and open countryside.

Steeped in character, the property boasts generously sized rooms and a welcoming, rural charm throughout.

The ground floor opens into a large dining area (5,97 x 5,96) with an open fireplace, leading through to a spacious kitchen (3,70/2,50 x 5,96) and an impressive sitting room (5,90 x 5,90), also with an open fire. At the far end, you'll find a unique round bar, (5,90 x 4,98) designed with a viewing window onto the original mill wheel giving a striking and authentic feature that beautifully showcases the property's heritage.

This area also connects to a number of practical spaces, including a shower room, WC, boiler room, and storeroom, as well as access to the outside area. A winding, wooden staircase leads up to the first and second floors which are both fully carpeted to create a warm and comfortable atmosphere throughout.

The first floor opens into an expansive office/reception space (5,78 x 5,14) , ideal for remote work, a studio, or a quiet reading...

LOCAL TAXES

Taxe habitation: EUR

NOTES