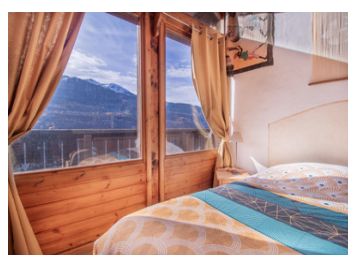
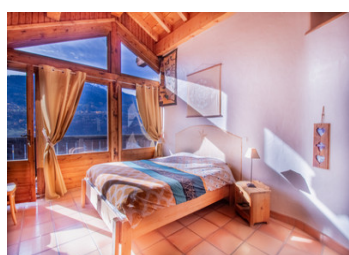
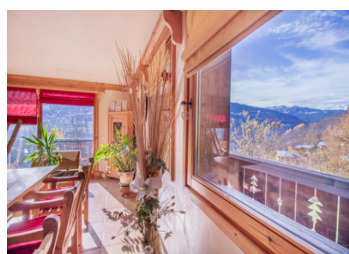


Independent chalet with Panoramic Mountain Views in Villemartin, close to 3 Valleys with small annex chalet



INFORMATION

Town:	Bozel
Department:	Savoie
Bed:	5
Bath:	4
Floor:	226 m2
Plot Size:	1000 m2



IN BRIEF

Discover this stunning individual chalet located in the heights of Villemartin, in a peaceful and secluded environment, offering breathtaking mountain views. The property consists of a main chalet and an independent annex with terrace, ideal for hosting family and friends or as a rental opportunity.

Main Chalet

Ground floor:

Entrance hall, equipped kitchen open to a bright living-dining area with access to a terrace and balcony, a WC, and an office.

Lower level (-1):

WC, shower room, cellar, bedroom, living room, boiler room, and fuel storage area.

Upper level (+1):

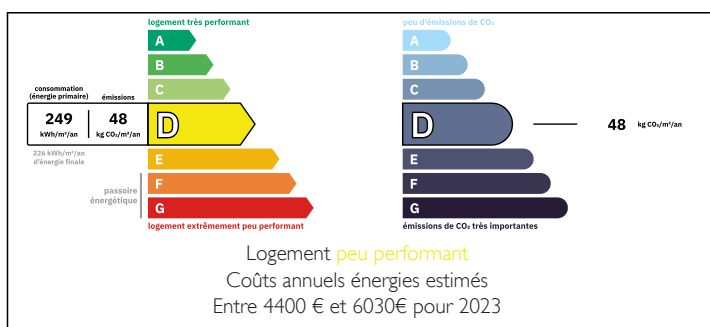
Bedroom with en-suite shower, two additional bedrooms, laundry room, bathroom, and WC.

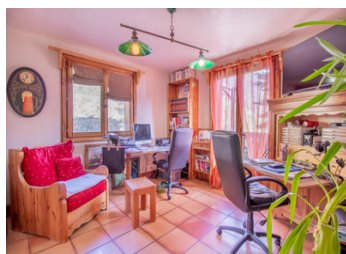
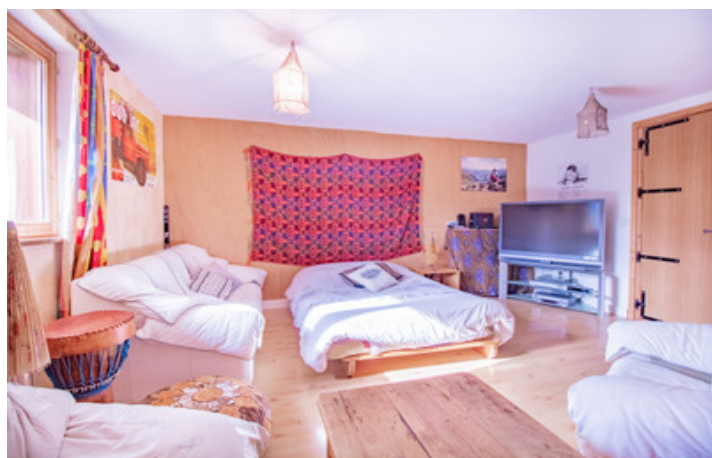
Annex

NB. Quoted prices relate to euro transactions. Fluctuations in exchange rates are not the responsibility of the agency or those representing it. The agency and its representatives are not authorised to make or give guarantees relating to the property. These particulars do not form part of any contract but are to be taken as a general representation of the property. Any areas, measurements or distances are approximate. Text, photographs and plans, where applicable, are for guidance only. Leggett and its representatives have not tested services, equipment or facilities and cannot guarantee the same.

Particulars for off-plan purchases are intended as a guide only. Final finishes to the property may vary. Purchasers are advised to engage a solicitor to check the plans and specifications as laid out in their purchase contract with the developer.

ENERGY - DPE





DESCRIPTION

Discover this stunning individual chalet located in the heights of Villemartin, in a peaceful and secluded environment, offering breathtaking mountain views.

The property consists of a main chalet and an independent annex with terrace, ideal for hosting family and friends or as a rental opportunity.

Main Chalet

Ground floor:

Entrance hall, equipped kitchen open to a bright living-dining area with access to a terrace and balcony, a WC, and an office.

Lower level (-1):

WC, shower room, cellar, bedroom, living room, boiler room, and fuel storage area.

Upper level (+1):

Bedroom with en-suite shower, two additional bedrooms, laundry room, bathroom, and WC.

Annex

The annex includes an equipped kitchen, a living-dining area, a shower room, WC, bedroom, mezzanine, and an attached terrace.

This rare property benefits from a privileged location, away from all noise, yet close to nearby resorts and amenities. Its natural surroundings, unobstructed views, and generous living spaces make it an authentic mountain chalet, perfect as a primary or secondary residence.

Information about risks to which this property is exposed is available on the Géorisques website : <https://www.georisques.gouv.fr>

LOCAL TAXES

Taxe foncière: 2084 EUR

Taxe habitation: EUR

NOTES