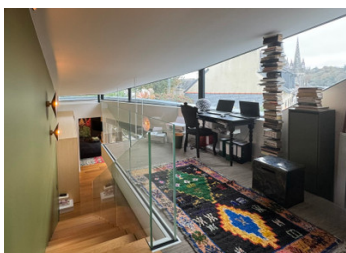
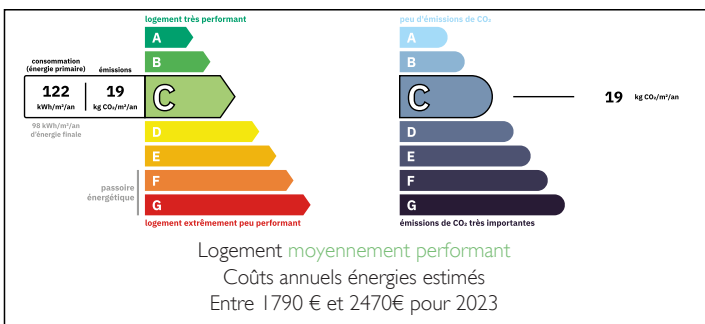


Exceptional Architect-designed home in the heart of the historic centre with terrace, separate studio & garage



ENERGY - DPE



INFORMATION

Town:	Quimper
Department:	Finistère
Bed:	3
Bath:	2
Floor:	178 m ²
Plot Size:	84 m ²

IN BRIEF

178 m² Architect-designed home in the heart of the historic centre with terrace, separate studio & garage. Stunning contemporary renovation by Carré Architecte, ideally situated in the historic centre of Quimper.

This remarkable stone town house has been completely transformed, featuring a sculptural 46 m² timber extension, a bright master suite with designer bathroom, mezzanine office, and a beautiful terrace sheltered from view.

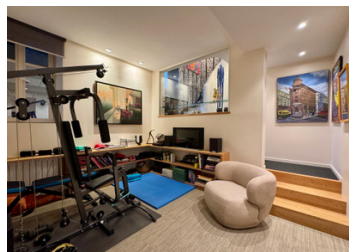
The original house offers a double-height living room with exposed beams, custom-designed interiors, and an elegant flow between kitchen, dining and living areas.

Separate studio apartment / guest accommodation
Large garage at street level.

A rare architectural property — perfect for art lovers and those seeking a unique, modern home in the heart of Quimper.

NB. Quoted prices relate to euro transactions. Fluctuations in exchange rates are not the responsibility of the agency or those representing it. The agency and its representatives are not authorised to make or give guarantees relating to the property. These particulars do not form part of any contract but are to be taken as a general representation of the property. Any areas, measurements or distances are approximate. Text, photographs and plans, where applicable, are for guidance only. Leggett and its representatives have not tested services, equipment or facilities and cannot guarantee the same.

Particulars for off-plan purchases are intended as a guide only. Final finishes to the property may vary. Purchasers are advised to engage a solicitor to check the plans and specifications as laid out in their purchase contract with the developer.



DESCRIPTION

Exceptional 178 m² Architect-Designed Home in the Heart of the Historic Centre

Stunning Renovation & Extension by Carré Architecte – A Light-Filled Contemporary Masterpiece

Located on a charming, sloping street in Quimper's hypercentre, this stone town house has been entirely redesigned and transformed in 2021 by the renowned Carré Architecte agency.

Originally created for a couple of art collectors, the property offers a true architectural promenade, blending sculptural volumes, contemporary lines, and abundant natural light.

A Remarkable Renovation – A Unique Living Space
What was once a traditional stone house has become an exceptional architectural home.

Multiple split levels, the angled gable, the sheltered courtyard terrace, and the bold extension all contribute to the building's distinctive character.

Entry is via the lower street level into a large garage, and the home unfolds upwards like an interior walk-through experience, culminating in the striking zinc-and-glass attic that crowns the extension.

46 m² Contemporary Timber Extension

Designed to house a bright and generous master suite ideal for daytime reading or relaxation, the extension integrates harmoniously with the original structure.

Its bold geometry softens the neighbouring stone wall and creates an intimate atmosphere on the terrace.

Inside, a spectacular bathroom with a central island and oversized mirror receives beautiful natural light through its large picture window.

A short flight of steps leads to an airy mezzanine office, suspended beneath the glazed roof with transparent balustrades.

Refined Volumes & Fully Tailored Interior Design

The original house has been entirely redesigned to showcase its structure and maximise circulation:

double-height living room revealing the beautiful exposed...

LOCAL TAXES

Taxe habitation: EUR

NOTES