

Leggett - Spectacular townhouse in a private courtyard awaiting final touches to begin the next chapter.



INFORMATION

Town:	Carentan-les-Marais
Department:	Manche
Bed:	2
Bath:	1
Floor:	110 m ²
Plot Size:	0 m ²

IN BRIEF

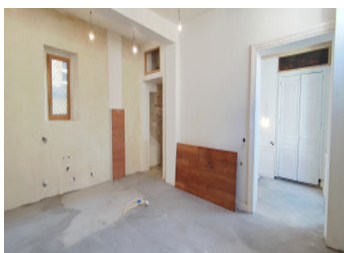
Rare on the market: renovated townhouse created from the former Carentan castle, offering exceptional character and strong investment potential. Set around a private courtyard, the property combines historic charm with modern upgrades.

Retaining original architectural features, it offers three ground-floor rooms, five first-floor rooms and a convertible loft—ideal for additional bedrooms or workspace—all served by a medieval stone staircase.

The house benefits from new electrics, plumbing and plastering, ready for personalised finishing.

Total space: 110 m² plus 20 m² of courtyard storage and private parking.

Perfect for a family project, rental unit, gîte, or a combined historic residence in the heart of Carentan.

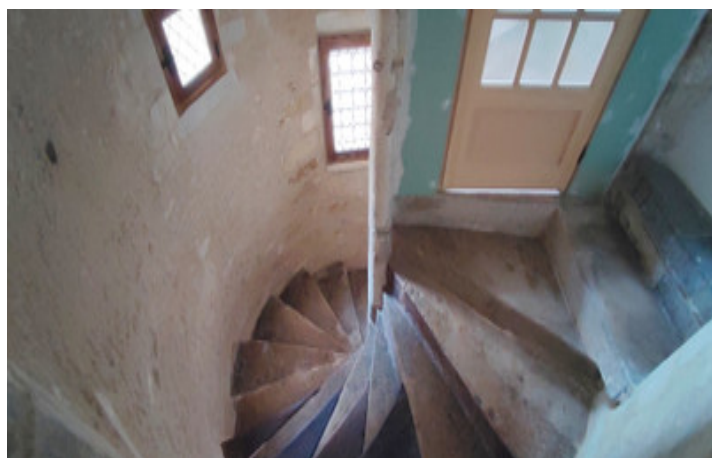


ENERGY - DPE

DPE not required.

NB. Quoted prices relate to euro transactions. Fluctuations in exchange rates are not the responsibility of the agency or those representing it. The agency and its representatives are not authorised to make or give guarantees relating to the property. These particulars do not form part of any contract but are to be taken as a general representation of the property. Any areas, measurements or distances are approximate. Text, photographs and plans, where applicable, are for guidance only. Leggett and its representatives have not tested services, equipment or facilities and cannot guarantee the same.

Particulars for off-plan purchases are intended as a guide only. Final finishes to the property may vary. Purchasers are advised to engage a solicitor to check the plans and specifications as laid out in their purchase contract with the developer.



DESCRIPTION

A Rare Opportunity in the Heart of Historic Carentan. A Property with a storied history

Set within the former grounds and indeed part of the ancient Carentan castle, this extraordinary townhouse offers a unique blend of architectural heritage, generous living space and exceptional creative potential. Once part of the medieval fortress, its stones are witness to centuries of Norman history. Used both a billet and prison for German soldiers in WWII the property now forms part a peaceful, private courtyard residence that invites your imagination for refined living.

The house celebrates the estate's heritage through beautifully preserved architectural features. The ground floor unfolds across three characterful rooms, each with authentic charm and flexible use. Above, five further rooms offer ample space for bedrooms, studies or relaxation areas, all naturally illuminated. A convertible loft crowns the house, providing an inspiring opportunity for additional accommodation or a dramatic studio. At the heart of the home stands a magnificent medieval stone staircase, an original feature that links the floors with sculptural beauty and historic gravitas.

The house benefits from extensive renovation works including new electrics, plumbing and plastering. The essential structure and utilities are in place, making the homes perfectly poised for a new owner to complete and personalise to their own taste and standard.

With 110 m² and 20 m² of additional courtyard storage, the property offers abundant opportunities. Whether envisioned as a spacious family residence, a gîte, an income-producing rental project, or a distinctive historic retreat, this property...

LOCAL TAXES

Taxe foncière: 800 EUR

Taxe habitation: EUR

NOTES