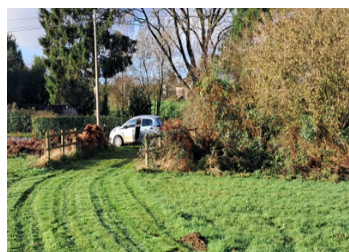


OFFER ACCPTED -Good quality grazing land with a portable hut. Electric and water are near to connect.

EXCLUSIVE



INFORMATION

Town:	Tinchebray-Bocage
Department:	Orne
Bed:	0
Bath:	0
Floor:	0 m2
Plot Size:	12410 m2

IN BRIEF

An excellent parcel of flat land ideal for horses, good grazing and a cabin in situ for occasional overnight stop to care for animals or wild camping from time to time.

Water and electric are both near..

ENERGY - DPE

DPE not required.

NB. Quoted prices relate to euro transactions. Fluctuations in exchange rates are not the responsibility of the agency or those representing it. The agency and its representatives are not authorised to make or give guarantees relating to the property. These particulars do not form part of any contract but are to be taken as a general representation of the property. Any areas, measurements or distances are approximate. Text, photographs and plans, where applicable, are for guidance only. Leggett and its representatives have not tested services, equipment or facilities and cannot guarantee the same.

Particulars for off-plan purchases are intended as a guide only. Final finishes to the property may vary. Purchasers are advised to engage a solicitor to check the plans and specifications as laid out in their purchase contract with the developer.



DESCRIPTION

Pasture land for animals or hay or other crops.

Information about risks to which this property is exposed is available on the G eorisques website : <https://www.georisques.gouv.fr>

LOCAL TAXES

Taxe habitation: EUR

NOTES