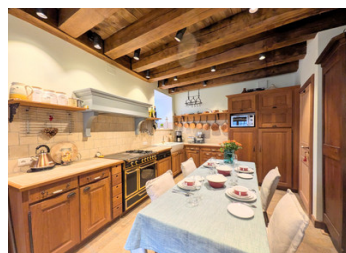


Restored 15th-Century Medieval Tower on the Banks of the Auvezère River in Ségur le Chateau.



INFORMATION

Town:	Ségur-le-Château
Department:	Corrèze
Bed:	3
Bath:	2
Floor:	200 m2
Plot Size:	3032 m2



IN BRIEF

Positioned in one of France's Most Beautiful Villages, this true "small château," La Tour Saint Laurent promises an exceptional lifestyle wrapped in beauty & history.

Listed for its historical significance the residence from the late 15th Century preserves its enthralling medieval features while introducing a graceful, contemporary elegance fully aligned with the character of the building. It is possible that there is some link to a previous Templar building. Surrounded by a series of "exterior rooms"—multiple dining terraces, a formal rose garden, and sculpted parklands—the property enjoys uninterrupted panoramas of the illuminated 12th-century château-fort across the water.

ENERGY - DPE

DPE not required.

NB. Quoted prices relate to euro transactions. Fluctuations in exchange rates are not the responsibility of the agency or those representing it. The agency and its representatives are not authorised to make or give guarantees relating to the property. These particulars do not form part of any contract but are to be taken as a general representation of the property. Any areas, measurements or distances are approximate. Text, photographs and plans, where applicable, are for guidance only. Leggett and its representatives have not tested services, equipment or facilities and cannot guarantee the same.

Particulars for off-plan purchases are intended as a guide only. Final finishes to the property may vary. Purchasers are advised to engage a solicitor to check the plans and specifications as laid out in their purchase contract with the developer.



LOCAL TAXES

Taxe habitation: EUR

NOTES

DESCRIPTION

At the heart of the home is a spectacular original stone spiral staircase, generous in size with unusually wide treads and comfortably low risers—offering an ease of ascent rarely found in medieval structures. Each luminous landing leads to a beautifully proportioned room, and subtle period details captivate at every turn.

Ground Floor

The bespoke kitchen (26.6m²) is charming and practical, with a heated stone floor, exposed beams, and space for dining. A French brass-trimmed Godin stove with double ovens complements the elegant atmosphere, while all modern conveniences are discreetly integrated. Adjacent are a utility room(11.6m²) with custom-made units, WC and cloakroom providing access to the lower dining terrace and enclosed walled rock garden.

First Floor

The first floor hosts a generous salon (35m²) centered around an impressive original stone fireplace with a wood burning stove and bearing a carved coat of arms. Sunlight pours through casement windows with transoms, and an arched door opens onto the upper terrace and rose garden. Exposed beams, rich wooden flooring, and refined ironwork showcase the craftsmanship of the era. Handcrafted dragon wall sconces and fleur-de-lys adorn the walls providing light and drama. Also on this floor is a bright sitting room (18.7m²) with large windows overlooking the river—equally inviting for morning coffee, quiet reading, or use as an additional bedroom.

Second Floor

The entire second floor forms a luxurious master suite. The bedroom (45m²) boasts a grand original fireplace, south-facing casement windows, and French doors leading to an iron-railed balcony with panoramic...