

Exceptional stone property with pretty views on 8780m of garden close to the river.



INFORMATION

Town:	Saint-Martial-d'Albarède
Department:	Dordogne
Bed:	0
Bath:	0
Floor:	180 m2
Plot Size:	8781 m2

IN BRIEF

Beautiful, historical stone property which has slowly been renovated over the last 30 years with high quality materials, project to be finished.

The roof has been fully redone as well as the structure, the inside and windows still need to be done.

The property is situated in a small hamlet, a very calm spot close to Excideuil (2km).

You will also find outbuildings, a shaded garden and a prairie leading down to the river 'La Loue'.

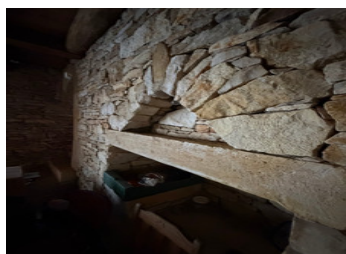


ENERGY - DPE

DPE not required.

NB. Quoted prices relate to euro transactions. Fluctuations in exchange rates are not the responsibility of the agency or those representing it. The agency and its representatives are not authorised to make or give guarantees relating to the property. These particulars do not form part of any contract but are to be taken as a general representation of the property. Any areas, measurements or distances are approximate. Text, photographs and plans, where applicable, are for guidance only. Leggett and its representatives have not tested services, equipment or facilities and cannot guarantee the same.

Particulars for off-plan purchases are intended as a guide only. Final finishes to the property may vary. Purchasers are advised to engage a solicitor to check the plans and specifications as laid out in their purchase contract with the developer.



DESCRIPTION

House to be discovered!

Information about risks to which this property is exposed is available on the Géorisques website : <https://www.georisques.gouv.fr>

LOCAL TAXES

Taxe habitation: EUR

NOTES