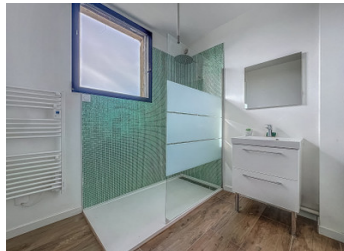


Riverside House with Exceptional Seine Views – A Renovator’s Dream



INFORMATION

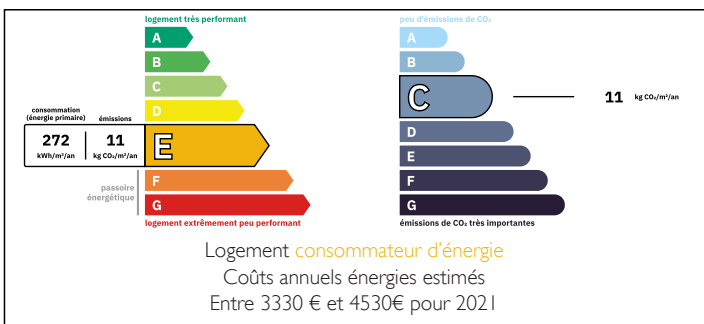
Town:	Belbeuf
Department:	Seine-Maritime
Bed:	4
Bath:	3
Floor:	134 m ²
Plot Size:	1810 m ²



IN BRIEF

This house sits directly on the banks of the Seine, offering endless potential for renovation enthusiasts seeking riverside living.

ENERGY - DPE



NB. Quoted prices relate to euro transactions. Fluctuations in exchange rates are not the responsibility of the agency or those representing it. The agency and its representatives are not authorised to make or give guarantees relating to the property. These particulars do not form part of any contract but are to be taken as a general representation of the property. Any areas, measurements or distances are approximate. Text, photographs and plans, where applicable, are for guidance only. Leggett and its representatives have not tested services, equipment or facilities and cannot guarantee the same.

Particulars for off-plan purchases are intended as a guide only. Final finishes to the property may vary. Purchasers are advised to engage a solicitor to check the plans and specifications as laid out in their purchase contract with the developer.



DESCRIPTION

Nestled on the banks of the Seine in Belbeuf, this property offers a rare balance between natural beauty and creative opportunity. The tranquil movement of the river provides a serene daily backdrop for those who value open water and spacious surroundings.

The house, located right on the Seine's edge, invites you to reimagine its interiors and restore its charm. Its position provides magnificent views and an unparalleled sense of connection to nature—perfect for those who see renovation not just as work, but as an art form.

Mornings unfold with gentle light over the water, while evenings invite reflection along the riverside.

For renovation enthusiasts, this property is a canvas: transform it into a refined family home or a peaceful retreat. Every update will reward you with the soothing presence of the river just outside your door.

This charming property is located 15 minutes from the A13 motorway and the shops of Tourville-la-Rivière, 30 minutes from Rouen, 1 hour 30 minutes from Paris, 1 hour 10 minutes from Deauville and its beaches, 45 minutes from Dieppe, and 2 hours 10 minutes from Calais. It comprises:

Ground floor:

Fitted kitchen (15 sq m)

Living room (35 sq m)

Pantry/Laundry room (10 sq m)

First floor:

Bedroom (55 sq m) with adjoining sitting room

Dressing room

Shower room

Second floor:

Bedroom 1 (12 sq m)

Bedroom 2 (24 sq m)

LOCAL TAXES

Taxe habitation:

EUR

NOTES