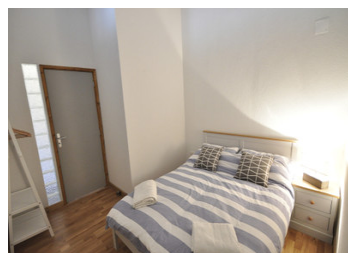
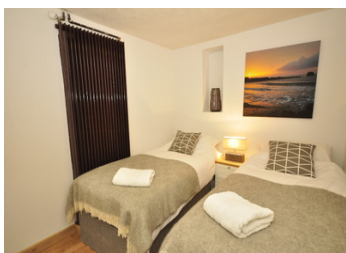


Renovated 6 person apartment for sale Villeneuve La Salle

EXCLUSIVE



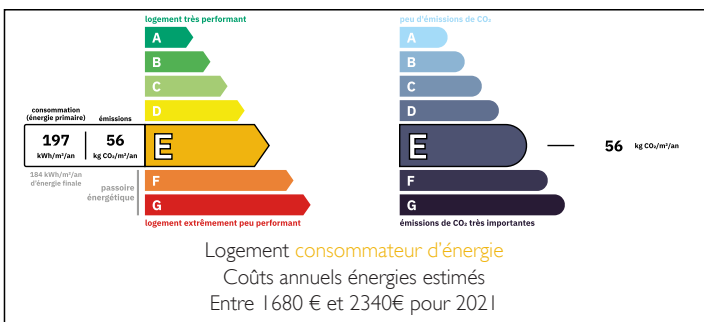
INFORMATION

Town:	La Salle-les-Alpes
Department:	Hautes-Alpes
Bed:	2
Bath:	1
Floor:	69 m2
Plot Size:	0 m2

IN BRIEF

Ski apartment, sleeps 6 in comfort, for sale in Serre Chevalier.

ENERGY - DPE



NB. Quoted prices relate to euro transactions. Fluctuations in exchange rates are not the responsibility of the agency or those representing it. The agency and its representatives are not authorised to make or give guarantees relating to the property. These particulars do not form part of any contract but are to be taken as a general representation of the property. Any areas, measurements or distances are approximate. Text, photographs and plans, where applicable, are for guidance only. Leggett and its representatives have not tested services, equipment or facilities and cannot guarantee the same.

Particulars for off-plan purchases are intended as a guide only. Final finishes to the property may vary. Purchasers are advised to engage a solicitor to check the plans and specifications as laid out in their purchase contract with the developer.



DESCRIPTION

The Apartment...

This large apartment was renovated a few years ago for the purposes of rentals and still generates good income.

The apartment was part of a hotel and has been cleverly converted to living space. The main living area has high ceilings and a vast bay window that provides wonderful natural light.

The kitchen is fully fitted and equipped, and all furniture as well as equipment can be left if required. The main bedroom has glass bricks that allow some natural light,

but the other 2 bedrooms are effectively "coin montagne" style bedrooms, with no windows. The price of the property reflects this aspect.

The apartment is one of four units which operate as "residence hotelerie" and therefore must show proof of rentals, though personal use is unlimited.

The property comes with a reception area and private ski lockers.

The Area....

The apartment is in a large residential complex which is well maintained and has ample parking space.

It is only 400 m from the new Pontillas tele-cabine, which gives fast and immediate access to the heart of the Serre Chevalier domain.

Co-owned building of 50 units
Provisional annual charges: 3700€

Information about risks to which this property is exposed is available on the Géorisques website : <https://www.georisques.gouv.fr>

NOTES