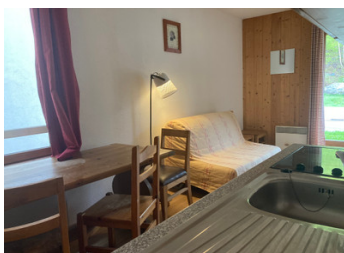


Nice ski apartment in the traditional resort of Saint Sorlin D'arves. 1 bedroom.

EXCLUSIVE



INFORMATION

Town:	Saint-Sorlin-d'Arves
Department:	Savoie
Bed:	1
Bath:	1
Floor:	28 m2
Outside Space:	7 m2

IN BRIEF

This is a small yet comfortable appartement in the vast Sybelles ski domain. Very close to the pistes, bar and restaurant the location offers everything you need for a hassle free ski holiday.

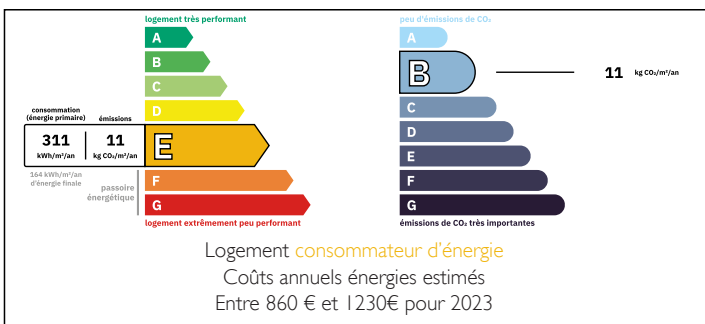
Located in the top end of the resort, after a short 4 minute walk you can ski down to the centre of resort and at the end of the day ski back to your departure point or take the free resort navette.

The apartment offers 27m2 including a separate bedroom configured for 3 people, a lounge kitchen area and separate bathroom with bathtub for the end of day relaxing.

Currently under a lease agreement the owners may recouperate the benefits of an annual fixed rental of 3598 euros

Annual co-ownership charges are 2930 euros of which the owner pays 403 euros and 339 euros tax fonciere.

ENERGY - DPE



NB. Quoted prices relate to euro transactions. Fluctuations in exchange rates are not the responsibility of the agency or those representing it. The agency and its representatives are not authorised to make or give guarantees relating to the property. These particulars do not form part of any contract but are to be taken as a general representation of the property. Any areas, measurements or distances are approximate. Text, photographs and plans, where applicable, are for guidance only. Leggett and its representatives have not tested services, equipment or facilities and cannot guarantee the same.

Particulars for off-plan purchases are intended as a guide only. Final finishes to the property may vary. Purchasers are advised to engage a solicitor to check the plans and specifications as laid out in their purchase contract with the developer.



DESCRIPTION

null

Co-owned building of 1 units
Provisional annual charges: 1648€

Information about risks to which this property is exposed is available on the Géorisques website : <https://www.georisques.gouv.fr>

LOCAL TAXES

Taxe habitation: EUR

NOTES