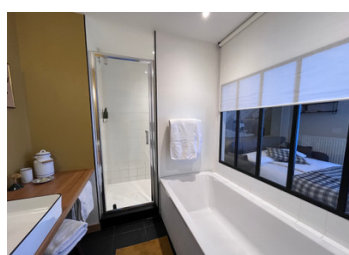
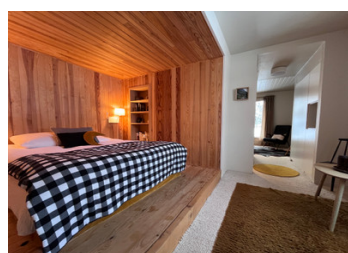
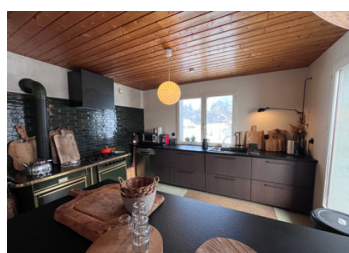
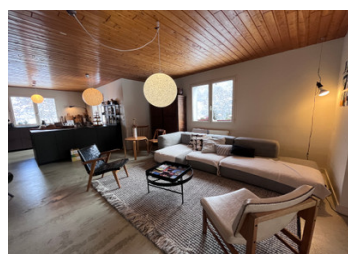


Cosy chambre d'hôte for sale, perfect idyllic mountain holidays at 1150m in the magnificent massif des Bauges

EXCLUSIVE



INFORMATION

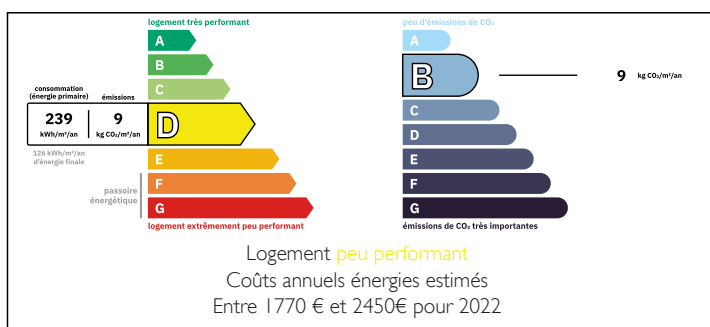
| | |
|-------------|---------------------|
| Town: | Les Déserts |
| Department: | Savoie |
| Bed: | 7 |
| Bath: | 6 |
| Floor: | 284 m ² |
| Plot Size: | 2100 m ² |

IN BRIEF

Located at the Col de Plainpalais, with views over the Bauges towards Annecy on one side and views over Chambéry to the Chartreuse on the other, this an ideal base to explore the Bauges national park. Savoie Grand Revard is on the doorstep with 150km of marked mountain trails. The gîte is equipped with 3 renovated bedroom suites and a 2-bedroom self-catered apartment. Two additional apartments are partially renovated and there's a welcoming open plan living space a dining area where guest can relax after a day in the mountains or visiting Chambéry, Aix-les-Bains or Annecy.

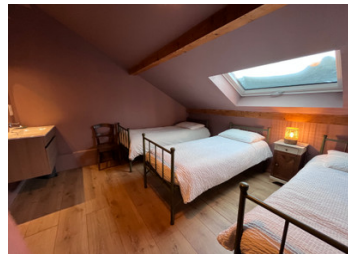
Perfect for all mountain activities with its agreeable summer climate, the more adventurous can attempt the Golet de l'agneau, climbing up to the top of Margeriaz at 1850m via a testing scramble. Alternatively, stroll amongst the glacial pingos admiring...

ENERGY - DPE



NB. Quoted prices relate to euro transactions. Fluctuations in exchange rates are not the responsibility of the agency or those representing it. The agency and its representatives are not authorised to make or give guarantees relating to the property. These particulars do not form part of any contract but are to be taken as a general representation of the property. Any areas, measurements or distances are approximate. Text, photographs and plans, where applicable, are for guidance only. Leggett and its representatives have not tested services, equipment or facilities and cannot guarantee the same.

Particulars for off-plan purchases are intended as a guide only. Final finishes to the property may vary. Purchasers are advised to engage a solicitor to check the plans and specifications as laid out in their purchase contract with the developer.



DESCRIPTION

The col is a classic cycling route featuring in the womens Tour de France in 2025. In 2026 we have the men's Tour de France, stage 17 starting in Chambéry and coming through the Bauges, already generating bookings for July.

Information about risks to which this property is exposed is available on the Géorisques website : <https://www.georisques.gouv.fr>

LOCAL TAXES

Taxe habitation: EUR

NOTES