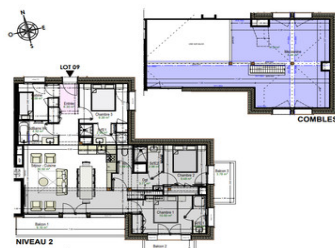


Newbuild penthouse duplex apartment 3 bedroom +bunk room in Belvédère, Courchevel - ski in & private parking



INFORMATION

Town:	Courchevel
Department:	Savoie
Bed:	3
Bath:	4
Floor:	95 m2
Outside Space:	17 m2

IN BRIEF

A fantastic 136m2 new-build penthouse duplex apartment available in Courchevel Belvedere. Scheduled for delivery in summer 2026, the 3 bedroom plus bunk room apartment enjoys a very special location, nestled in the forest and surrounded by local wildlife, with direct access to the Vanoise National Park, the Three Valleys ski area, and Lac de la Rosière right from your doorstep. A short walk to the piste and ski right back to the door!

As a new build project you can reclaim 20% VAT, and have reduced notaire fees - ask me for more information on these great financial incentives.

The apartment features 3 double bedrooms and a bunk room, outdoor balconies, and a bright double-height living area.

Part of a small co proprietary, this apartment comes with a ski locker, storage cupboard and private parking space.

Courchevel Belvédère is a highly...

ENERGY - DPE

DPE not required.

NB. Quoted prices relate to euro transactions. Fluctuations in exchange rates are not the responsibility of the agency or those representing it. The agency and its representatives are not authorised to make or give guarantees relating to the property. These particulars do not form part of any contract but are to be taken as a general representation of the property. Any areas, measurements or distances are approximate. Text, photographs and plans, where applicable, are for guidance only. Leggett and its representatives have not tested services, equipment or facilities and cannot guarantee the same.

Particulars for off-plan purchases are intended as a guide only. Final finishes to the property may vary. Purchasers are advised to engage a solicitor to check the plans and specifications as laid out in their purchase contract with the developer.

DESCRIPTION

New-build penthouse, duplex 3 bedroom and cabin apartment, in a magical forest setting in Courchevel Belvédère, close to skiing and nature. a short walk to the piste and ski back to the door!

This beautiful apartment is located in the sought-after Belvédère area of Courchevel, a unique setting where forest, mountains, skiing and wildlife meet. Nestled among the trees and bordering the protected Les Avals valley, the property offers immediate access to nature while remaining connected to the world-famous Three Valleys ski area, the largest linked ski domain in the world with more than 600 km of pistes.

Courchevel is one of the most prestigious Alpine resorts, renowned for its exceptional skiing, gastronomy and year-round mountain lifestyle. In winter, residents enjoy world-class alpine skiing, ski touring, snowshoeing, cross-country skiing and sledging. In summer, the resort transforms into an outstanding alpine playground for hiking, trail running, road and mountain biking, climbing, paragliding and exploring the beautiful Lac de la Rosière and the Vanoise National Park, both just moments away.

The Belvédère area is particularly prized for its peaceful natural environment. Positioned slightly above the resort and close to the forest, it offers easy access to the slopes and quick connections to the centre of Courchevel while remaining immersed in nature and wildlife.

This penthouse duplex apartment offers bright and well-proportioned living spaces together with outdoor balconies enjoying views of the surrounding forest and mountains. The main living space benefits from a double-height ceiling, creating a light and spacious atmosphere...

LOCAL TAXES

Taxe habitation: EUR

NOTES