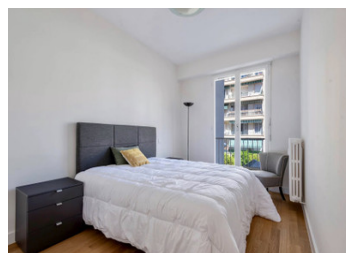
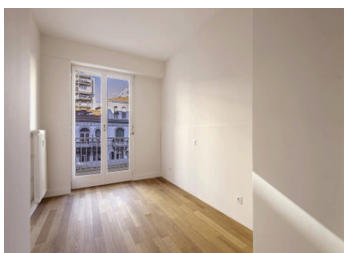
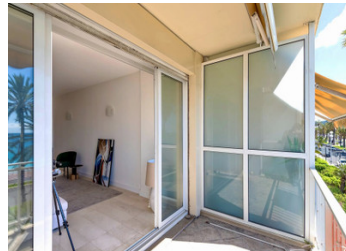


## Nice - Promenade des Anglais. Perfect holiday home for with this 2 bedroom apartment



## INFORMATION

Town:	Nice
Department:	Alpes-Maritimes
Bed:	2
Bath:	1
Floor:	65 m2
Outside Space:	9 m2



## IN BRIEF

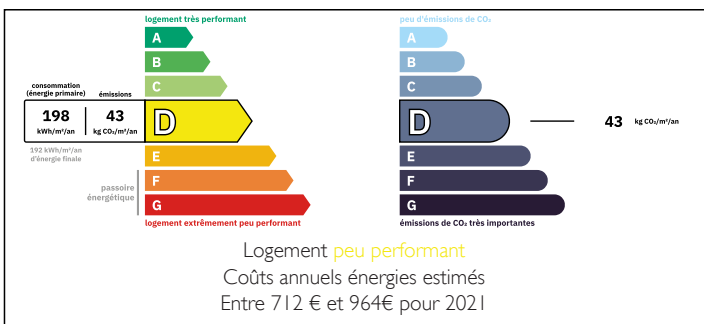
Nice - Promenade des Anglais. Seafront 2 bedroom apartment with double exposure South and North. It includes an entrance, living room opening unto the balcony overlooking the Mediterranean sea, a kitchen, both bedrooms with a balcony are located at the back of the property offering peace and quiet, a shower room, separate toilets.

Sold with a cellar.

Possibility to buy a parking space also.

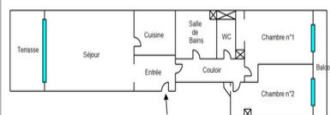
Perfect holiday home.

## ENERGY - DPE



NB. Quoted prices relate to euro transactions. Fluctuations in exchange rates are not the responsibility of the agency or those representing it. The agency and its representatives are not authorised to make or give guarantees relating to the property. These particulars do not form part of any contract but are to be taken as a general representation of the property. Any areas, measurements or distances are approximate. Text, photographs and plans, where applicable, are for guidance only. Leggett and its representatives have not tested services, equipment or facilities and cannot guarantee the same.

Particulars for off-plan purchases are intended as a guide only. Final finishes to the property may vary. Purchasers are advised to engage a solicitor to check the plans and specifications as laid out in their purchase contract with the developer.



## DESCRIPTION

Nice - Promenade des Anglais. Seafront 2 bedroom apartment with double exposure South and North. It includes an entrance, living room opening unto the balcony overlooking the Mediterranean sea, a kitchen, both bedrooms with a balcony are located at the back of the property offering peace and quiet, a shower room, separate toilets.

Sold with a cellar.

Possibility to buy a parking space also.

Perfect holiday home.

-----

Co-owned building of 36 units

Provisional annual charges: 3600€

-----

Information about risks to which this property is exposed is available on the Géorisques website : <https://www.georisques.gouv.fr>

## LOCAL TAXES

**Taxe foncière: 1630 EUR**

## NOTES