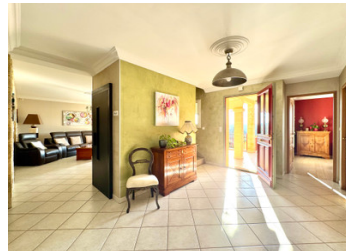


## Exceptional Views of Domme – High-End Périgord-Style Estate Built in 2011, with Pool, Elevator & Photovoltaic



## INFORMATION

Town:	Domme
Department:	Dordogne
Bed:	5
Bath:	3
Floor:	175 m <sup>2</sup>
Plot Size:	2591 m <sup>2</sup>

## IN BRIEF

Located in the sought-after village of Domme, this stunning Périgord-style residence, built in 2011, boasts exceptional panoramic views over the bastide and the Dordogne Valley.

Blending authentic charm with modern comfort (energy rating B, photovoltaic panels), the property features 5 bedrooms, including 1 with independent access, and 2 located on the ground floor.

The reception area, filled with natural light and benefiting from dual aspects, opens onto two covered terraces and is served by an elevator connecting directly to the garage.

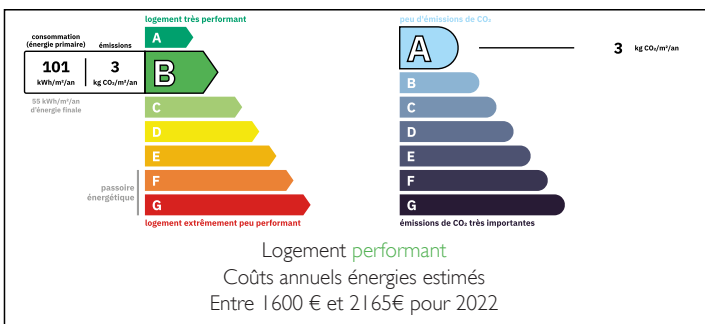
The well-appointed, welcoming kitchen also enjoys direct access to a covered terrace, ideal for al fresco dining, as well as to the adjoining dining room.

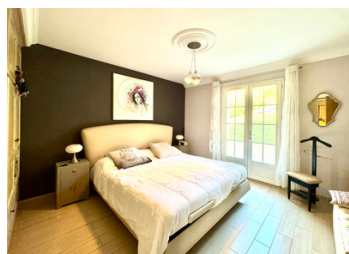
Upstairs, a private sleeping area offers two

NB. Quoted prices relate to euro transactions. Fluctuations in exchange rates are not the responsibility of the agency or those representing it. The agency and its representatives are not authorised to make or give guarantees relating to the property. These particulars do not form part of any contract but are to be taken as a general representation of the property. Any areas, measurements or distances are approximate. Text, photographs and plans, where applicable, are for guidance only. Leggett and its representatives have not tested services, equipment or facilities and cannot guarantee the same.

Particulars for off-plan purchases are intended as a guide only. Final finishes to the property may vary. Purchasers are advised to engage a solicitor to check the plans and specifications as laid out in their purchase contract with the developer.

## ENERGY - DPE





## DESCRIPTION

Set in a privileged environment at the heart of one of the most beautiful locations in the Périgord Noir, this exceptional property offers a rare combination of heritage, elegance, and modern comfort.

Located on the heights of Domme, this Périgord-style residence, built in 2011, enjoys a truly outstanding setting. In a commanding position, it benefits from breathtaking panoramic views over the medieval bastide and the Dordogne Valley.

Living in Domme means embracing a unique historical heritage, an unspoiled natural environment, and the gentle lifestyle for which the Périgord Noir is renowned—while remaining within easy walking distance of shops and everyday amenities.

### The Main Residence

Designed with high-quality finishes and excellent energy performance (Energy Rating B), the home seamlessly blends regional authenticity with contemporary features:

**Entrance / Reception Area:** A spacious, light-filled living area with direct access to covered, ground-level terraces, and served by an elevator connecting from the garage.

**Kitchen:** Functional and inviting, with direct access to a covered terrace—perfect for al fresco dining—as well as to the adjoining dining room.

**Bedrooms:** Five in total, including two on the ground floor and one with independent access (ideal for guest accommodation or professional use).

**Bathrooms:** Three in total, one on each level.

**Independent Studio:** Located at pool level.

**Lower Ground Floor** (full basement – 161 m<sup>2</sup> / 1 734 ft<sup>2</sup>)

Two garages

Workshop

Storage areas

## LOCAL TAXES

Taxe habitation: EUR

## NOTES