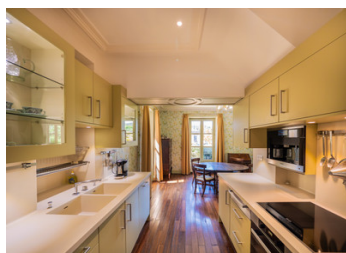


Exceptional Prestigious Manor house with guest accommodation in the heart of historic Sarlat la Caneda.

EXCLUSIVE



INFORMATION

Town:	Sarlat-la-Canéda
Department:	Dordogne
Bed:	6
Bath:	6
Floor:	372 m2
Plot Size:	1866 m2

IN BRIEF

An exceptional landmark residence in the heart of historic Sarlat la Canéda, overlooking the elegant Jardin du Plantier

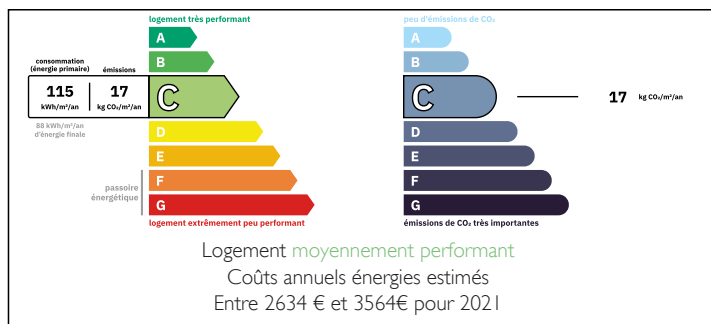
Built in 1925 for the town's mayor, this distinguished property combines heritage & grandeur with refined impeccable high-quality finishes.

Currently operating as a luxury boutique B&B, the main house (307m2) offers generous living spaces, including a luminous salon with fantastic views of the gardens and historic Sarlat, an elegant dining room, 4 bedrooms all with ensuite bathrooms, 1 of which is on the ground floor, a fully equipped high quality kitchen and a charming one-bedroom apartment occupying the 2nd floor.

A lift provides seamless access throughout.

A beautifully restored coach house adds a deux-car garage and two more ensuite guest bedrooms

ENERGY - DPE



NB. Quoted prices relate to euro transactions. Fluctuations in exchange rates are not the responsibility of the agency or those representing it. The agency and its representatives are not authorised to make or give guarantees relating to the property. These particulars do not form part of any contract but are to be taken as a general representation of the property. Any areas, measurements or distances are approximate. Text, photographs and plans, where applicable, are for guidance only. Leggett and its representatives have not tested services, equipment or facilities and cannot guarantee the same.

Particulars for off-plan purchases are intended as a guide only. Final finishes to the property may vary. Purchasers are advised to engage a solicitor to check the plans and specifications as laid out in their purchase contract with the developer.



DESCRIPTION

A rare and distinguished residence, this exquisite 1925 manor, originally commissioned for the Mayor of Sarlat, embodies timeless elegance, discretion, and refined French living at its finest.

Completely reimagined to an uncompromising standard, the property now offers a seamless blend of architectural heritage and contemporary luxury. Every detail has been curated with precision, resulting in a home of remarkable character, comfort, and sophistication.

Set within 1866m² of beautifully landscaped private gardens and overlooking the serene Jardin du Plantier, the estate enjoys an enviable combination of absolute tranquillity, yet just moments from the vibrant medieval centre.

A Lifestyle Property Without Compromise.

Whether envisioned as an elegant private residence, a refined family retreat, or an exclusive boutique hospitality venture, this property offers exceptional versatility with complete discretion and turnkey readiness.

The property offers approximately 372 m² of living space, and comprises:

A magnificent manor house (307m²) with four beautifully appointed bedroom suites, including one on the ground floor,

A private top-floor apartment with its own terrace overlooking the gardens.

An independent coach house (65m²), offering additional guest accommodation and a three-car garage

Each space has been designed to offer privacy, comfort, and understated luxury, ideal for hosting family, friends, or distinguished guests.

Refined Interiors & Bespoke Finishes

From the moment you enter, the tone is set by a striking marble-floored entrance hall, enhanced by

LOCAL TAXES

Taxe foncière: 4500 EUR

Taxe habitation: EUR

NOTES