

New Build: 2-Bedroom Garden Level Apartment in Ornella Residence



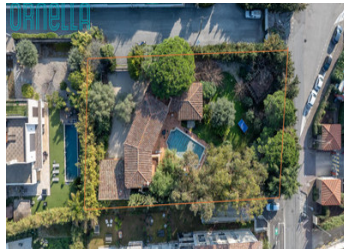
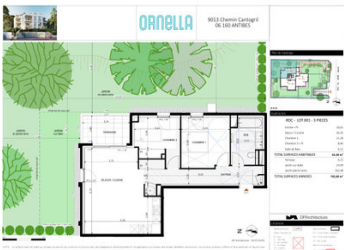
INFORMATION

Town:	Antibes
Department:	Alpes-Maritimes
Bed:	2
Bath:	1
Floor:	63 m ²
Outside Space:	6 m ²

IN BRIEF

Just a short stroll from the Mediterranean, this beautifully designed new build apartment offers the rare luxury of coastal living wrapped in lush, private garden surroundings.

Set on the garden level of the Ornella residence, this bright 63 m² apartment opens directly onto professionally landscaped grounds, home to olive, fruit, cedar, and pine trees. The interior has been thoughtfully designed to maximize natural light throughout, with quality tiled flooring in the living areas and warm wood flooring in the bedrooms. A 6 m² private terrace provides a seamless connection to the serene outdoor setting. Residents benefit from a full range of amenities: secured access, elevator, underground parking, and a private cellar.



ENERGY - DPE

DPE not required.

NB. Quoted prices relate to euro transactions. Fluctuations in exchange rates are not the responsibility of the agency or those representing it. The agency and its representatives are not authorised to make or give guarantees relating to the property. These particulars do not form part of any contract but are to be taken as a general representation of the property. Any areas, measurements or distances are approximate. Text, photographs and plans, where applicable, are for guidance only. Leggett and its representatives have not tested services, equipment or facilities and cannot guarantee the same.

Particulars for off-plan purchases are intended as a guide only. Final finishes to the property may vary. Purchasers are advised to engage a solicitor to check the plans and specifications as laid out in their purchase contract with the developer.

DESCRIPTION

This stylish 63 m² garden-level apartment is part of the Omella residence, a secure new build development set within Mediterranean gardens just 100 meters from the sea. With 2 bedrooms, a private terrace, underground parking, and a cellar, it offers a complete and low-maintenance coastal lifestyle.

Antibes occupies a prime position on the French Riviera, nestled between Nice and Cannes along one of Europe's most celebrated coastlines. The Omella residence sits within reach of Antibes' vibrant old town, the famous Marché Provençal, and the historic Picasso Museum. This is an exceptional opportunity to acquire a new build property in one of the Côte d'Azur's most desirable and well-connected towns.

Information about risks to which this property is exposed is available on the Géorisques website : <https://www.georisques.gouv.fr>

LOCAL TAXES

Taxe habitation: EUR

NOTES