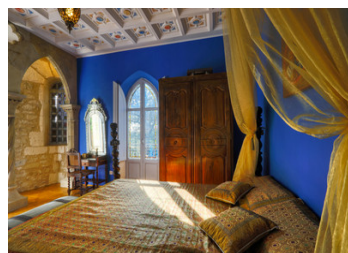
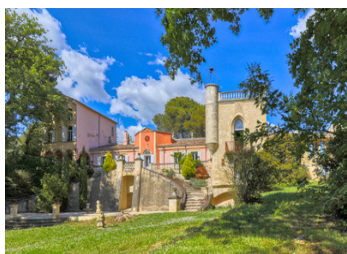


LUBERON – Amazing character Estate with land, pool, water, views and outbuildings in the heart of Provence



INFORMATION

Town:	Lourmarin
Department:	Vaucluse
Bed:	11
Bath:	9
Floor:	612 m ²
Plot Size:	96482 m ²

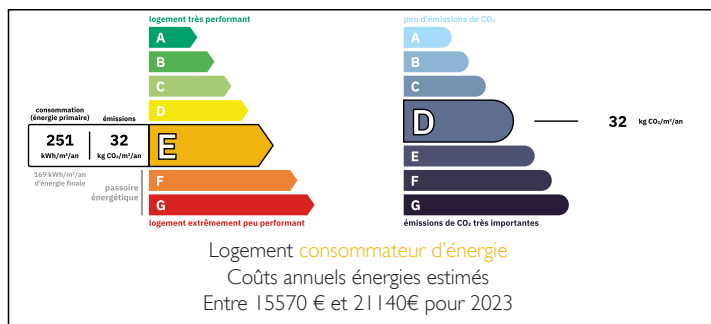
IN BRIEF

Not far from Lourmarin, this magnificent estate of approx. 612 m² extends over 9.6 hectares of woodland and meadows in a natural setting. The property is composed of several buildings dating from the 16th, 18th and 20th centuries.

The built ensemble includes a main residence of approx. 300 m² as well as outbuildings and additional spaces of approx. 300 m². The main house offers beautiful historic rooms, carefully restored in a traditional style: several living rooms, a music room, a kitchen and five bedrooms, two of which are en suite. Outside, a park with mature trees, two majestic staircases and an ochre-coloured dome create a remarkable setting.

A former 16th-century building has been converted into six independent units with terraces, close to a swimming pool (16 x 8 m) and a children's pool (4 x 4 m). A large covered...

ENERGY - DPE



NB. Quoted prices relate to euro transactions. Fluctuations in exchange rates are not the responsibility of the agency or those representing it. The agency and its representatives are not authorised to make or give guarantees relating to the property. These particulars do not form part of any contract but are to be taken as a general representation of the property. Any areas, measurements or distances are approximate. Text, photographs and plans, where applicable, are for guidance only. Leggett and its representatives have not tested services, equipment or facilities and cannot guarantee the same.

Particulars for off-plan purchases are intended as a guide only. Final finishes to the property may vary. Purchasers are advised to engage a solicitor to check the plans and specifications as laid out in their purchase contract with the developer.



DESCRIPTION

A home in search of its master!

With 9.6 hectares in one continuous plot, including extensive woodland and open meadows, this estate offers a generous natural setting ideal for family living and for keeping animals or horses on a private basis. The property benefits from several boreholes, water from the Canal de Provence, as well as a natural spring. It also includes a children's cabin and an aviary.

Located in the heart of the Luberon Regional Natural Park, the estate enjoys a typically Provençal setting among vineyards, rolling hills and perched villages. The surrounding villages are lively yet authentic, offering shops, restaurants and markets where producers, artisans and locals meet.

The location is ideal: just 40 minutes from Aix-en-Provence, a city of art and history, and 45 minutes from the TGV station. Marseille-Provence International Airport is less than an hour away.

The Luberon is renowned for the diversity of its landscapes: lavender fields, vineyards, olive groves, forests and gentle hills. Leisure opportunities are numerous, including walking, cycling, horse riding and discovering iconic villages such as Gordes, Roussillon or Lourmarin.

A unique place where nature, heritage and the Provençal art of living come together in harmony.

Land area: 96,482 m²

The built area of approx. 612 m² forms a single architectural entity, with a main residence of approx. 300 m² and additional living spaces of approx. 300 m².

The main house includes 5 bedrooms, 3 of which are en suite, with 2 shower rooms and 1 bathroom. The additional living spaces, with a surface...

LOCAL TAXES

Taxe foncière: 5500 EUR

Taxe habitation: EUR

NOTES