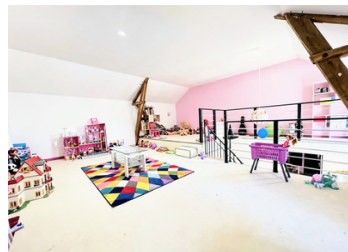
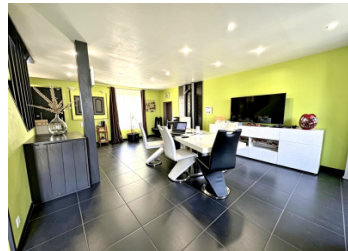
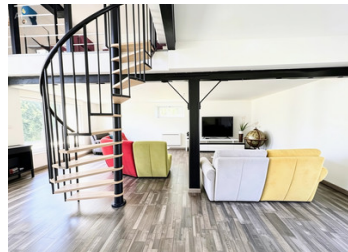


Spacious Contemporary 5-Bedroom Home in Neuvic-Entier

EXCLUSIVE



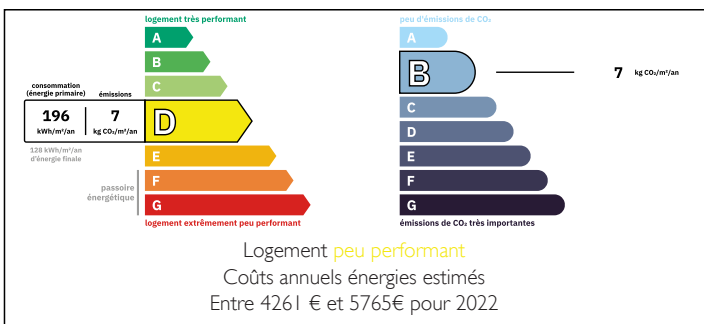
INFORMATION

Town:	Neuvic-Entier
Department:	Haute-Vienne
Bed:	5
Bath:	2
Floor:	243 m ²
Plot Size:	1375 m ²

IN BRIEF

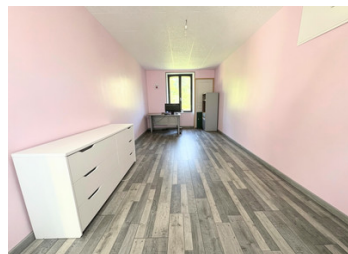
This beautifully presented home combines contemporary living with charming rural character. The property offers generous living space, stylish modern interiors, and a generously sized garden.

ENERGY - DPE



NB. Quoted prices relate to euro transactions. Fluctuations in exchange rates are not the responsibility of the agency or those representing it. The agency and its representatives are not authorised to make or give guarantees relating to the property. These particulars do not form part of any contract but are to be taken as a general representation of the property. Any areas, measurements or distances are approximate. Text, photographs and plans, where applicable, are for guidance only. Leggett and its representatives have not tested services, equipment or facilities and cannot guarantee the same.

Particulars for off-plan purchases are intended as a guide only. Final finishes to the property may vary. Purchasers are advised to engage a solicitor to check the plans and specifications as laid out in their purchase contract with the developer.



DESCRIPTION

Inside, the home opens into a spacious dining and kitchen area (40m²), creating a welcoming heart to the property.

To the left, there is a versatile room (18.3m²) ideal as a home office, playroom, or hobby room, which continues into a stylish modern lounge (42.5m²). Stairs lead to a mezzanine level (42.4m²) offering excellent potential as an additional bedroom, games room, or creative space.

To the right of the entrance is a bathroom (12m²) featuring a jacuzzi bath and separate shower, leading through to a practical laundry area (3m²) and additional storage space.

The first floor opens onto a generous landing area (16m²) suitable for a variety of uses, such as a reading corner or office space. This level comprises three further rooms suitable as bedrooms or dressing rooms (18.2m²) (18.8m²) (13.2m²), along with a bathroom (3.8m²) fitted with a bath, shower attachment, and WC.

Outside, the property continues to impress with a terrace ideal for outdoor dining, a small barn (15m²), workshop shelter (15m²), and a dedicated area for chickens, enhancing the authentic country lifestyle. The grounds extend to approximately 1375m², while the house itself offers around 243m² of living space. Heating is provided by an efficient pellet burner system.

A rare opportunity to enjoy modern comfort combined with the charm and tranquillity of countryside living.

Amenities can be found just a 10-minute drive away in the nearby town of Châteauneuf-la-Forêt. There is a train station, 10 minutes walk away (Limoges-Eymoutiers line) and a nearby school bus...

LOCAL TAXES

Taxe foncière:

1448 EUR

NOTES